



Directorate General of Lighthouses & Lightships
Ministry of Shipping
Government of India

Expression of Interest for 70 Selected Lighthouse Sites

for

*Development of Tourism Projects
alongside Lighthouses on
Public Private Partnership Basis*

October, 2015

Directorate General of Lighthouses & Lightships,
Ministry of Shipping, Government of India

Table of contents

1. Introduction	3
2. Tourism in India	3
3. Promotion of Tourism at Lighthouses across India	4
3.1 The Selected Lighthouse Sites to which TEFS has been done	5
3.2 The Selected Lighthouse Sites to which TEFS has not done	6
3.3 The Expression of Interest (EOI)	6
3.4 Contact Details	7
4. Schedule I: Lighthouse site and Indicative Project Ideas	9
5. Schedule II: Profile of initial selected Lighthouse Sites	10
5.1 Gopalpur Lighthouse, Odisha	10
5.2 False Point Lighthouse, Odisha	13
5.3 Dwarka Lighthouse, Gujarat	15
5.4 Veraval Lighthouse, Gujarat	18
6. Schedule III: Indicative terms and conditions	20
7. Schedule IV: Formats for Expression of Interest	21
7.1 Letter of Application	21
7.2 Details of Applicant	23
7.3 Details of development interest for specific Lighthouse location	25
8. Schedule V: Mapping of Lighthouses	27 - 98

1 Introduction

Globally, Lighthouses are not only perceived as a navigational aid, but also as a symbol of history & icons of maritime heritage and are being developed into unique tourism destinations. While the presence of historic lighthouses act as a driver to attract tourists across the globe, the spectacular panoramic vistas available from these tall structures along the coastline add on to the attractiveness of the locations. Majority of these structures are remotely located away from urban areas offering a serene atmosphere & tranquil ambience to visitors.

Governments globally are fast realizing the latent potential of Lighthouse Tourism and have been proactively taking steps to help develop this segment. Lighthouses are being opened for general public and are facilitated with development of allied tourist infrastructure. Countries like South Africa, Scotland and other countries in the UK & other European Countries, South Korea, United States etc. are few among the pioneers in promoting Lighthouse as a tourism destination.

2 Tourism in India¹

Travel & Tourism is a mirror of our evolving world. Reflecting economic, social and environmental shifts in our times, the Tourism sector is a dynamic, inspiring force, clearly mapping how nations are advancing as individual societies and economies, as well as members of the global community. Because of its dynamic nature, a nation's tourism sector requires constant monitoring and understanding to ensure it is being leveraged for the greater good of the people of the destination, and as a competitive force on the global landscape. This is especially true for nations looking to the tourism sector as a vehicle for national growth, development and employment generation.

Tourism today is one of the largest global industries and a major engine for economic growth and employment generation. International tourist arrivals have grown steadily from 25 million in 1950 to over 1.1 billion in 2014. At present, 1 in every 11 people worldwide are employed by the tourism sector, with the industry generating US\$ 7.6 trillion or 10% of the global GDP in 2014 (Source: WTTC Travel & Tourism Economic Impact 2015).

International tourist arrivals worldwide are expected to increase by 3.3% a year from 2010 to 2030 to reach 1.8 billion by 2030, according to United Nations World Tourism Organisation's (UNWTO) long term forecast Tourism Towards 2030. Between 2010 and 2030, arrivals in emerging destinations (+4.4% a year) are expected to increase at twice the rate of those in advanced economies (+2.2% a year) as per UNWTO estimates.

Travel and tourism is a global opportunity that cannot be ignored. In India beginning with the turn-around in 2002, Foreign Tourist Arrivals have steadily grown from 2.38 million in 2002 to 7.70 million in 2014 (provisional) accounting for 0.68% of global international tourist arrivals. In terms of its share of the international tourism receipts India earned US\$19657million (Rs. 120,083 crore) or 1.58% in 2014 (provisional).

¹ Source - Draft National Tourism Policy 2015

India's transformation economically, demography and psycho-graphically over the past two decades on the back of economic reforms has led to the emergence of a large urban middle class which has become the main stay of India's tourism sector. From 270 million domestic visits in 2002 it has steadily grown to 1.14 billion in 2013. Supporting this growth in tourism activity, as a highly labour intensive activity, tourism and tourism support activities create a high proportion of employment and career opportunities, providing 277 million jobs globally, and directly accounting for 23 million jobs or 5.5% of total employment in India, as per the World Travel and Tourism Council (WTTC) estimate. This number swells to 36.6 million or 8.7% of the total jobs when the indirect jobs created by the sector are also included. The WTTC estimate has pegged the total contribution of Travel & Tourism to GDP in India at INR 7,642.5 billion or 6.7% of GDP in 2014. This is expected to rise by 7.3% per annum to INR 16.587 billion in 2025, accounting for 7.6% of GDP, and generating 45.5 million jobs (9% of the nation's total workforce).

The Government of India recognizes that *“the tourism sector has a major role to play to promote a faster, sustainable and more inclusive economic growth – the goal of the Twelfth Five Year Plan. It has better prospects for promoting pro – poor growth than many other sectors”*.

With the above in mind, and recognizing the need to continuously examine the sector policy vis-à-vis the changing traveler and industry landscape, the Ministry of Tourism has re-visited the National Tourism Policy 2002 and drafted the National Tourism Policy 2015.

3 Promotion of Tourism at Lighthouses across India

Even though the tourism sector in India is growing, it is over a narrow base. Considering India's potential, the gains made are relatively modest. Therefore a set of ambitious targets are required which define clear, cohesive, sustainable and equitable approaches to delivering performance in line with opportunities available for growth and diversification.

The growth of the tourism sector will have a direct and tangible impact on the Indian economy in terms of spreading benefits across the country including remote areas and providing employment and entrepreneurial opportunities to youth, women, marginalized sections of the society and those in the informal sector. In addition tourism will facilitate the preservation of cultural and historical traditions.

Having duly recognised the above and the untapped potential that lies along the coastline of India, the Ministry of Shipping (MoS) through the Directorate General of Lighthouses & Lightships (DGLL) has decided to open up the opportunities in Tourism at its assets that vest with it, i.e. Lighthouses.

In view of the above, the MoS & DGLL intend to promote the Lighthouses across India as tourism destinations & means of promoting Lighthouse Tourism in India, with the following key objectives:

- To enhance & develop the existing lighthouses & its surrounding areas into a unique tourism destination and a Maritime Landmark.

- To identify and develop possible tourism infrastructure components to facilitate promotion of tourism at lighthouse premises.
- To explore the possibilities of developing these projects under Public Private Partnership (PPP) by integrating commercially viable interventions at the feasible locations in order to make the project viable.

In this regard, DGLL has initially carried out the Techno-Economic Feasibility Study (TEFS) through M/s. IIDC Limited (Formerly known as IL&FS Infrastructure Development Corporation Limited) with the objective of development of the proposed facilities on PPP format for 12 lighthouses out of which DGLL has released the Request for Qualification (RFQ) for following 8 Lighthouse Sites, separately.

1.	Aguada Lighthouse in Goa	2.	Kanyakumari & Muttom Lighthouses in Tamil Nadu
3.	Chandrabhaga Lighthouse in Odisha	4.	Mahabalipuram Lighthouse in Tamil Nadu
5.	Kadalur Point Lighthouse in Kerala	6.	Minicoy Lighthouse in Lakshadweep Islands
7.	Kanhoji Angre Lighthouse (Island South of Mumbai Coast)	8.	Sunk Rock Lighthouse (Off Mumbai Coast)

3.1 The other 4 Selected Lighthouse Sites for which Techno Economic Feasibility Study has been conducted.

Now, apart from the above 8 Lighthouses for which the Stage-I of Bid Process (i.e. Request for Qualification (RFQ)) has been initiated, the MoS / DGLL propose to develop Tourism Project around following 4 (four) selected Lighthouses on Public Private Partnership (PPP) basis.

S.No.	Identified Lighthouse Site	State
1.	Gopalpur	Odisha
2.	False Point	Odisha
3.	Dwarka	Gujarat
4.	Veraval	Gujarat

The range of indicative project components includes viewing towers / galleries, amphitheatres with Sound & Light Shows, Laser Shows, resorts & eco-resorts, Restaurants, Cafes, Food Courts, Drive-in restaurants, Arts & Craft Centre, theme /

amusements centres, Event Arenas, Amphitheatres, family entertainment centers, souvenir stores, etc.

A brief on site specific details and likely project facilities at each Lighthouse location (based on the availability of land and potential of site) have been indicated in ***Schedule III : Profile of 4 (four) selected Lighthouse Sites*** in this Expression of Interest (EOI), Document. Interested Private Sector entities are also free to suggest their own alternative ideas for developing Tourism related facilities at each of the selected sites.

3.2 Selected Lighthouse sites for which Techno Economic Feasibility Study has not been conducted

MOS/DGLL has selected 66 (Sixty six) more Lighthouse site for development under PPP basis. The range of indicative project component is similar to the para 3.1. Interested Private Sector entities are also free to suggest their own alternative ideas for developing Tourism related facilities at each of the selected sites.

3.3 The Expression of Interest (EOI)

- a. The MoS / DGLL invite private sector parties either individually or in consortium to submit non-binding expressions of interest (EOI) with regard to the development at the selected 70 (Seventy) Lighthouse locations across the Country.
- b. The purpose of this invitation is to obtain response from interested parties pertaining to the range of indicative project components, suggestions on alternative / additional facilities that can be proposed, suggestions for making this initiative & PPP development a success and to obtain feedback on any other concerns / issues, if any are being anticipated.
- c. The DGLL invites EOI from interested & experienced parties for developing Tourism related Projects on the Lighthouse Sites identified. The details of the Lighthouse Sites, indicative project ideas and indicative terms and conditions for the proposed tourism projects are provided in:
 - (i) **Schedule I: Lighthouse Sites and Indicative Project Ideas(4 Lighthouses)**
 - (ii) **Schedule II: Profile of 4 (four) selected Lighthouse Sites**
 - (iii) **Schedule III: Indicative Terms and Conditions**
 - (iv) **Schedule IV: Format of Expression of Interest.**
 - (v) **Schedule V: Mapping of all 70 Lighthouses**
- d. In response to this invitation for Expression of Interest (EOI), interested parties may submit their interests / ideas for development of tourism projects in the identified Lighthouse Sites. The applications submitted may, either be on the lines of the indicative project ideas provided in this EoI **or** for any other new tourism ideas feasible under the project objectives and viable for development on PPP format.
- e. Separate EOIs may be submitted for each location strictly as per the format in **Schedule V: Formats for Expression of Interest.**
- f. The DGLL hereby clarifies the following:
 - (i) This Expression of Interest (EOI) is not a pre-qualification / shortlisting process
 - (ii) The MOS / DGLL or any of its designated agencies would subsequent to this EOI, take up a transparent and competitive two stage bid process for selection of the PPP Developer(s) for development of each of the proposed Projects.
 - (iii) No reimbursement of cost of any type will be paid to persons or entities expressing interest in response to this document.

- (iv) MoS / DGLL has prepared this document to provide interested parties background information on the proposed Projects. While MoS / DGLL have taken due care in the preparation of the information contained herein and believe it to be accurate, neither MoS nor DGLL, any of its authorities or agencies or any of their respective officers, employees, agents or advisors gives any warranty or make any representations, express or implied as to the completeness or accuracy of the information contained in this document or any information which may be provided in association with it.
- (v) The information is not intended to be exhaustive. Interested parties are required to make their own inquiries before taking decision to submit their Expression of Interest. The information is provided on the basis that it is non-binding on MoS or the DGLL, any of its authorities or agencies or any of their respective officers, employees, agents or Advisors.
- (vi) MoS / DGLL reserve the right not to proceed with any or all of the Project(s) or to change the configuration of the Project(s) or to change the process or procedure to be applied.
- (vii) The DGLL reserves the right not to take up the bid process for any or all the Lighthouse Sites.
- (viii) The DGLL reserves the right to annul the process without assigning any reason whatsoever.
- (ix) The application should be type-written in English Language only.

3.4 Contact Details

Interested & Experienced parties are invited to submit their Expression of Interest to the Directorate General of Lighthouses & Lightships (DGLL). The Expression of Interest should reach the DGLL, Noida at the address given below only, latest by **17.00 hours** on **07th December , 2015**.

For queries regarding the EOI and Submission of EOI:

Mr. D.K. Sinha, Dy. Director General,
Directorate General of Lighthouses & Lightships,
“Deep Bhawan”
A-13, Sector-24,
Noida-201301 (U.P.)
Tel: + 91-120-2412509, E-mail: noida-dgl@nic.in

Or

Project Advisor (for 4 lighthouses only. Ref Para No 3.1) :

IIDC Limited
(Formerly IL&FS Infrastructure Development Corporation Ltd)

Contact Persons:

Mr. Vishal S. Salgaonkar, Asst. Vice President Mrs. Raji.R, Manager
Ph. +91-80-4034 3301/ +91-80-4034 3326
E-mail: vishal.salgaonkar@ilfsindia.com, r.raji@ilfsindia.com

For Site Visit co-ordination, please contact:

Sl No	Name of Directorate	Address & Phone No
1.	Lighthouse under Mumbai Directorate	Director Deep Bhawan, M.G.Road Ghatkopar (E) , Mumbai- 400077 Phone – 022-25068390
2.	Lighthouse under Jamnagar Directorate	Director Deep Bhawan , P.N. Marg Jamnagar- 361008 Phone – 0288-2750416
3.	Lighthouse under Kolkata Directorate	Director Deep Bhawan D-372/2 , Taratolla Road, Kolkata- 700088 Phone – 033-24017660
4.	Lighthouse under Chennai Directorate	Director Deep Bhawan 5/20 , Jaffar Syrang Street, Chennai – 044- 25232808
5.	Lighthouse under Port Blair Directorate	Deep Bhawan 44, B.S. Road Port Blair- 744101 Phone – 03192-233298
6.	Lighthouse under Visakhapatnam Directorate	Director East Wing , 5th Floor , Dock Labour Board , Karmik Jyothi Building, Port Area , Visakhapatnam – 530035 Phone – 0891- 2731878
7.	Lighthouse under Cochin Directorate	Director Deep Bhawan Gandhinagar , Kadavanthara P.O. Cochin – 6822020 Phone – 0484- 2205720

4 Schedule I: Lighthouse Site and Indicative Project Ideas

Sl No	Name of Lighthouse	Extent of land in acres (Approx.)	Indicative projects ideas	Indicative investment in Rs. Crore*
1.	Gopalpur Lighthouse, Odisha	2.80	<ul style="list-style-type: none"> o Viewing Gallery o Information Centre & Souvenir Outlet o Eco Resort o Restaurant / food Court / Cafe o Family Entertainment Centre 	4.40
2.	False Point Lighthouse, Paradip, Odisha	26.00	<ul style="list-style-type: none"> o Viewing Gallery o Information Centre & Souvenir Outlet o Sound & Light / Laser Show o Eco-resort with camp sites o Adventure sports o Connectivity infrastructure(Speed Boats) 	20.0
3.	Dwarka Lighthouse, Gujarat	4.50	<ul style="list-style-type: none"> o Viewing Gallery o Information Centre & Souvenir Outlet o Outdoor event Arena o Restaurant / Food Court / Drive-in Restaurant o Art & Crafts Village o Amphitheatre & Landscaped area o Sound & Lightshow / Laser Show 	11.50
4.	Veraval Lighthouse, Gujarat	2.50	<ul style="list-style-type: none"> o Viewing Gallery o Information Centre & Souvenir Outlet o Outdoor event Arena o Landscaped area & Amphitheatre o Restaurants o Accommodation facilities 	5.00

*Indicative capital investment for the Projects are based on preliminary Project assessments and the MoS / DGLL reserves the right to change the Project Ideas and to increase / decrease the estimated capital investment which will be specified in the Bidding Documents for each Project.

5 Schedule II: Profile of initial selected Lighthouse Sites

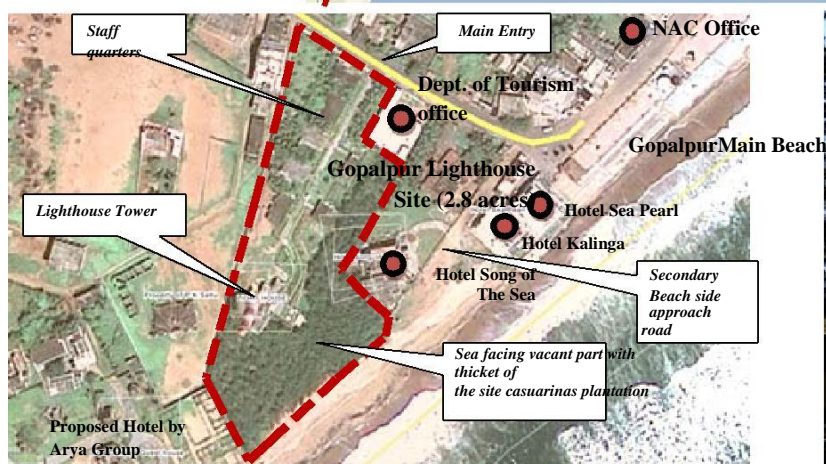
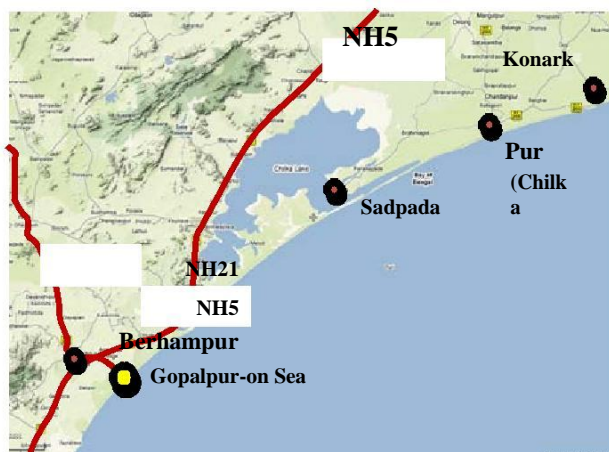
A brief profile and indicative locations of the identified sites is provided in the sections below.

5.1 Gopalpur Lighthouse, Odisha

1. Project Site

The lighthouse at Gopalpur is located near the Gopalpur beach which is an emerging beach destination in Odisha. Gopalpur (also referred to as Gopalpur-on-Sea) is a town located in Ganjam district in the state of Odisha. The details of connectivity to Gopalpur by various modes is as below.

- **Air:** Gopalpur is linked by air from Bhubaneswar Airport (170 km).
- **Roads:** National Highway No. 5 (Howrah to Chennai) and National Highway No. 217 pass through Berhampur and connect the town with Hyderabad (880 km), Visakhapatnam (305 km), Bhubaneswar (175 km), Kolkata (615 km), Konark (220 km), Puri (213 km) and Paradip (277km)
- **Rail:** Nearest railway station is Berhampur Railway Station (16 km) which is well linked to important cities like Bhubaneswar, Kolkata, Visakhapatnam, etc.



Location and Images of Gopalpur Lighthouse

2. Tourism Scenario of Gopalpur

The Beach and the Lighthouse Tower are the only tourist attractions of Gopalpur. However the town is part of a larger tourist circuit of Chilika Lake region which comprises of number religious & leisure tourism attractions. Some of the major tourism destinations within this circuit is as below:

- **Berhampur** : Famous for its silk sarees, Berhampur is an important commercial town of South Odisha located 16 km away from the subject site.
- **Taptapani**: A hot sulphur spring with medicinal properties is the prime attraction of this place. The other attractions of Taptapani are its tribal communities and the picturesque landscape. There is also a deer park maintained by the forest department.
- **Mahuri Kalua** : Enroute to Taptapani, Mahuri Kalua is another scenic spot with the shrine of Goddess Kalua.
- **Patisonapur** : A virgin beach far from the noise and crowd of the city, down south of Gopalpur, across the river Bahuda offers peace and tranquility to all visitors.
- **Taratarini** : The shrine of the Goddess Taratarini atop a hill on the bank of river Rushikulya near the village Purushottampur, amidst natural beauty draws a number of tourists to this palce.
- **Rambha** : Located along the vast Chilika lake, Rambha is famous for its scenic beauty. Some of the captivating islands of Chilika such as honeymoon island and breakfast island are within close proximity to Rambha.
- **Aryapalli** : It has a quiet and charming beach by the sea and is a haven for nature lovers. Aryapalli is located is located 16 km away from the subject site.
- **Rushikulya Muhana** : An ecological site where river Rushikulya meets the Bay of Bengal. This place acts as a mass nesting ground for the Olive Ridley turtles.
- **Tampara** : This is a fresh water lake in the district of Ganjam, situated at the Southern area of Odishanear Gopalpur.



Images of some of the prominent tourist attractions around Gopalpur

3. Indicative Project Components²

The proposed development is envisaged in an area of approximately 2.80 acres. The indicative project components and investment potential is as in table below:

Indicative Project Components	Indicative Investment Potential (in Rs Crore)
<ul style="list-style-type: none">o Viewing Galleryo Information Centre & Souvenir Outleto Eco Resorto Restaurant / food Court / Cafeo Family Entertainment Centre	Rs. 4.40 crore

² *Indicative capital investment for the Project is based on preliminary Project assessments and the MoS / DGLL reserves the right to change the Project Ideas and to increase / decrease the estimated capital investment which will be specified in the Bidding Documents for each Project.*

5.2 False Point Lighthouse, Odisha

1. Project Site

The lighthouse at False Point, is located at Batighara Village and is around 16 kilometers from Paradip city, which is an emerging investment destination in Odisha with several upcoming industrial projects. Paradip is a major sea-port town. The lighthouse at False Point is in the midst of wetlands farmed by creeks and backwaters towards the east of Paradip city. The False Point lighthouse site is approachable only through waterways from the fishing jetty at Atharabanki (18 banks) in Paradip. The road connectivity to the location is under construction from Kendrapada side. Paradip is connected to all major cities such as Bhubaneswar, Cuttack etc. through Air, Roadways and Railways.

- **Air:** Paradip is linked by air from Bhubaneswar Airport (115 km).
- **Road:** National Highway No. 5A and State Highway No. 12 connect Paradip to National Highway No. 5. This highway connects the town with Bhubaneswar (175 km), Visakhapatnam (590 km), Kolkata (453 km), Konark (112 km), Puri (128 km) and Goplapur (277km).
- **Rail:** Nearest railway station is Cuttack Railway Station (94 km)



Location and Images of False Point Light House

2. Tourism Scenario around Paradip

Paradip Port, Paradip Beach, Hanuman Mandir, Jaganath Mandir & Paradip Light House are some of the local tourism destination within Paradip. The major tourism attractions in and around Paradip are:

- **Marine aquarium:** Largest biggest aquarium in Odisha equipped with 28 tanks consisting of a variety of marine and fresh water species of fish.

- **Virgin beach:** The virgin beach is a unique blend of wet and dry sand with rows of ships in the backyard waiting to enter Paradip Port.
- **Nehru bangla:** The Nehru Bangla is located at Sangam Point of River Mahanadi and Bay of Bengal where one can enjoy the turbulent sea on one side and the peaceful river on the other side.
- **Fish Harbour:** A walk along the harbor gives a glimpse of the various fishing boats coming in to the harbour.
- **Smurti Udyan:** At the musical fountain at the sylvan gardens of “Smruti Udyan”, a memorial to the victims of the super cyclone of 1999, one can relax and take a break from the daily struggle of life.
- **Gahirmatha Beach/Gahirmatha Marine Sanctuary:** Gahirmatha Beach, a part of the Gahirmatha Marine Wildlife Sanctuary, is famous for the annual migration of Olive Ridley sea turtles along with rare white crocodiles.
- **Bhitarkanika National Park:** The Bhitarkanika National Park is situated in the Kendrapara District of Odisha. Sprawling over an area of 625 sq km, this national park is a natural habitat of animals like leopard cat, fishing cat, spotted deer, sambar, python, king cobra, terrapin and marine turtle.



3. Proposed project Components³

The proposed development is envisaged in an area of approximately 26.00 acres. The indicative project components and investment potential is as in table below:

Indicative Project Components	Indicative Investment Potential (in Rs Crore)
<ul style="list-style-type: none"> o Viewing Gallery o Information Centre & Souvenir Outlet o Sound & Light / Laser Show o Eco-resort with camp sites o Adventure sports o Connectivity infrastructure(Speed Boats) 	Rs 20.0 Crore

³ *Indicative capital investment for the Project is based on preliminary Project assessments and the MoS / DGLL reserves the right to change the Project Ideas and to increase / decrease the estimated capital investment which will be specified in the Bidding Documents for each Project.*

5.3 Dwarka Lighthouse, Gujarat

1. Project Site

The lighthouse is located in the state of Gujarat and is approximately 1.7 km, from the Dwarkadish Temple. The site (area of approximately 4.50 acres) is in close proximity to the Sunset point and an amphitheatre in north. The lighthouse site is accessed via internal road connecting the site with the National Highway 8E at a distance of 1.5 Km that runs through the city of Dwarka.

The city of Dwarka is accessible by air, road and rail as summarised below:

- **Air:** The Jamnagar airport is located around 148 kilometers from Dwarka
- **Road:** Dwarka is connected by state highways (SH6&6A) and the National Highway ((NH8,8A &8B).) to other major cities in Gujarat.
- **Rail:** Dwarka railwaystation falls in the Ahmedabad-Okhla rail route and is well connected to other major cities and towns in India



Location and Images of Dwarka Light House

2. Tourism Scenario of Dwarka

The Dwarkadish Temple is the most important tourist attraction within Dwarka. A typical tourist circuit would include a visit to the Dwarka Temple, Gomati Ghat & few other temples in the surroundings. Some of the other tourist attractions in & around Dwarka are listed below.

- **Shri Dwarkadhish Jagat Mandir:** The major tourist attraction in Dwarka and believed to be one of the Char Dhams (pilgrimage centers) holy to Hindus
- **Rukmini Devi Temple:** This temple is situated 2 km away from Dwarka City. The exterior of the Rukmini Temple comprises of richly carved sculptures of god and goddesses, along with male and female figures.
- **Gomati Ghat Temples:** On the banks of river Gomti, there is a Shiva temple, as well as smaller shrines of Lord Rama, Lord Krishna and Krishna's friend Sudama.
- **Beyt Dwarka:** Beyt Dwarka, also known as Beyt Shankhodhar, is a small island and was the main port in the region before the development of Okha. It offers opportunities to spot dolphins, marine excursions, camping and picnicking. There are a number of temple sites located on the island which are visited by devotees.
- **Bhadkeshwar Mahadev Mandir:** The temple is on top of a hillock in the middle of the sea to the west of Dwarka. During the high tide the temple gets surrounded by water and cannot be accessed.
- **Dwarika Pitha / the Museum of Shardapith Math:** The Dwarika Pitha also known as Dwarkamath (monasteries) dedicated to lord Krishna is a popular religious site in Dwarka. It is one of the four cardinal mathas founded by Adi Shankaracharya.
- **Nageshwar Magadev Temple / Nageshwar Jyotirlinga Temple:** located at the coast, along the route between Dwarka city and Beyt Dwarka Island. A 25 m tall statue of a sitting Lord Shiva and a large garden with a pond are major attractions at this site.

Other tourist sites within Dwarka include Gayatri Mandir, Shrines of Meerabai, ISKCON Gate and Temple, Swaminarayan Mandir etc.



Dwarkadhish Temple

Rukmini Devi Temple

Gomati Ghat along the Gomati river

Images of some of the prominent tourist attractions around Dwarka

3. Proposed Project Components⁴

The proposed development is envisaged in an area of approximately 4.50 acres. The indicative project components and investment potential is as in table below:

Indicative Project Components	Indicative Investment Potential (in Rs Crore)
<ul style="list-style-type: none">o Viewing Galleryo Information Centre & Souvenir Outleto Outdoor event Arenao Restaurant / Food Court / Drive-in Restauranto Art & Crafts Villageo Amphitheatre & Landscaped areao Sound & Lightshow / Laser Show	Rs.11.50 Crore

⁴ *Indicative capital investment for the Project is based on preliminary Project assessments and the MoS / DGLL reserves the right to change the Project Ideas and to increase / decrease the estimated capital investment which will be specified in the Bidding Documents for each Project.*

5.4 Veraval Lighthouse, Gujarat

1. Project Site

The city of Veraval is located in the Junagadh district of Gujarat and located approximately 6 to 7 km from PrabhasPatan – a prominent pilgrimage centre within the country, known for the Somnath Temple. Geographically, Veraval is characterized by its long coastline lined with beaches, majority of which are yet to be developed in a significant manner. Further, the site has direct access to Veraval beach which attracts local visitors in large numbers during the evening and weekends. The subject property (approximately 2.50 acres) is situated at Veraval, at a distance of approximately 8 kms from the popular Somnath temple & around 350 meters from the Birla Temple within the Indian Rayon Industries campus. Veraval is accessible by air, road and rail as summarised below:

- **Air:** the nearest airports to Veraval are Diu, Porbandar and Rajkot
- **Road:** Veraval is located at the Junction of two National Highway, NH-8D and NH-8E.
- **Rail:** Veraval is an important railway station of Gujarat.



Location and Images of Veraval Lighthouse

2. Tourism Scenario of Veraval

The key attractions in and around veraval is as below.

- **Somnath Temple:** The temple of Somnath is one of the 12 Jyotirling (Shrines of Lord Shiva), sacred to the Hindus. An added attraction is the light and sound show showcasing the majestic architecture and splendor of the Somnath Temple.
- **Bhalka Tirth:** located to the north of the Somnath temple, towards Veraval (4-5 km) is another sacred Hindu shrine.

- **Triveni Sangam / Triveni Ghat :** Triveni Sangam / Triveni Ghat is the point of confluence for three rivers namely Hiranya, Kapila and Saraswati.
- **Suraj Mandir:** The Suraj Mandir (Sun Temple) dates back to the same era as the Somnath Temple and is located to the north of the Triveni Sangam.
- **Ahilyabai Temple:** The history of the Ahilyabai Temple is closely interlinked with the history of the Somnath Temple. It is believed that this temple was built as a substitute for the main Somnath Temple when it was raided and ravaged.
- **The Veraval Fort / Junagad Gate:** The Junagad gate is one of the remains of the Veraval Fort.
- **Prabhas Patan Museum:** The Prabhas Patan Museum houses the remnants of the earlier temples. The entry to the museum is free of charge.
- **Veraval Beach:** The Veraval beach is a picturesque and scenic beach located 6 km from the Somnath Temple in proximity to the subject site.
- **Somnath Markets:** The Somnath market is located in proximity to the Somnath Temple and tourists can choose from a wide range of local handicrafts.



Images of some of the prominent tourist attractions around Veraval

3. Proposed Project Components⁵

The proposed development is envisaged in an area of approximately 2.50 acres. The indicative project components and investment potential is as in table below:

Indicative Project Components	Estimated Project Cost (in Rs Crore)
<ul style="list-style-type: none"> o Viewing Gallery o Information Centre & Souvenir Outlet o Outdoor event Arena o Landscaped area & Amphitheatre o Restaurants o Accommodation facilities 	Rs. 5.00 Crore

⁵ Indicative capital investment for the Project is based on preliminary Project assessments and the MoS / DGLL reserves the right to change the Project Ideas and to increase / decrease the estimated capital investment which will be specified in the Bidding Documents for each Project.

6 Schedule III: Indicative terms and conditions

The indicative terms and conditions for the projects are given below. It is clarified that the terms and conditions provided are subject to change and would be finalized at the time of issue of the bid documents for the specific projects.

No	Category	Description
1.	Mode of development	Public Private Partnership (PPP) mode through either Lease-cum-development Agreements or Concession / Authorization Agreements depending on the Project
2.	Project terms	<ul style="list-style-type: none"> • Land would be Provided for the Project on lease basis on predefined terms • No other development other than Tourism related would be permitted • Sub-lease of land would not be permitted
3.	Tenure of Lease / Concession	<ul style="list-style-type: none"> • 30 years / 15 Years / 10 Years depending on the Project
4.	Selection of private partner for tourism project	Through a transparent and competitive bid process
5.	Bid Parameter	Annual Development Premium / Annual Concession Fee, to be quoted
6.	Project Funding	Shall be the responsibility of the selected developer and no financial assistance shall be provided by the MoS / DGLL.
7.	Consortium permitted	Yes
8.	Bid process	<p>Bid process shall prescribe the following:</p> <ul style="list-style-type: none"> • RFQ / RFP/any other suitable competitive & transparent bidding Procedure to be followed for submission of bids for the project • Qualification criteria shall be prescribed in RFQ for qualifying / shortlist eligible bidders. Qualification criteria would consist of technical (experience) / financial criteria <ul style="list-style-type: none"> • RFP will be issued only to qualified eligible bidders. Only financial bids of Technically qualified bidders shall be considered
9.	Formation of Special Project Company (SPC) for project	Mandatory depending on the Project
10.	Responsibility of SPC	To design, finance, develop and operate the tourism project at the specific locations with the minimum development and facilities prescribed in the bid documents for the project.

7. Schedule IV: Formats for Expression of Interest

7.1 Letter of Application

(On Letterhead, including full postal address, telephone, fax, e-mail addresses)

Date:

To,
Directorate General of Lighthouses & Lightships,
“Deep Bhawan”
A-13, Sector-24,
Noida-201301 (U.P.)

Sir,

1. Being duly authorised to represent and act on behalf of
the undersigned hereby apply expressing interest in developing the Tourism Project at..... [
insert location of project]
2. Attached to this letter is a duly filled format for the Expression of Interest as prescribed by
the Directorate General of Lighthouses & Lightships, along with copies of original
documents defining:
 - a) The Applicant's legal status;
 - b) The principal place of business;
 - c) All documents as specified in EOI
3. The Directorate General of Lighthouses & Lightships and its authorised representatives are
hereby authorised to conduct any inquiries or investigations to verify the statements,
documents, and information submitted in connection with this application, and to seek
clarification from client regarding any aspects. This letter of Application will also serve as
authorisation to any individual or authorised representative of any institution, to provide such
information deemed necessary to verify statements and information provided in this
application, or with regard to the resources, experience, and our competence.
4. This application is made in the full understanding that:
 - a) The Directorate General of Lighthouses & Lightships reserves the right to reject or
accept any application, cancel the process, and reject all applications; and
 - b) The Directorate General of Lighthouses & Lightships shall not be liable for any such
actions and shall be under no obligation to inform the Applicant of the grounds for them.

5. The undersigned declare that the statements made and the information provided in the duly completed application are complete, true, and correct in every detail.

Signed
Name
For and on behalf of (-----)

7.2 Details of Applicant

- I. a) Name:
- b) Country of incorporation:
- c) Address of the corporate headquarters and its branch office(s), if any, in India:
- d) Date of incorporation and/ or commencement of business:
- e) Nature of Applicant (whether public or private company, proprietorship firm, partnership)

2. Brief description of the Company including details of its main lines of business and proposed role and responsibilities in this Project:

3. Details of individual(s) who will serve as the point of contact/ communication for the Authority:

- a) Name:
- b) Designation:
- c) Company:
- d) Address:
- e) Telephone Number:
- f) E-Mail Address:
- g) Fax Number

4. Previous experience in tourism projects:

Please include details such as

- a) Project type
- b) Location and extent of Land

- c) Capital investment in project
- d) Years of operation
- e) Indicative Turnover for last three years of operations of Tourism project(s)

5. In case of a Consortium:

- a) The information above (1-4) should be provided for all the Members of the Consortium

7.3 Details of development interest for specific Lighthouse location

The details of the proposal shall be provided for the specific location as indicated in **Schedule I: Lighthouse Sites and Indicative Project Ideas**. In the event of EOI being submitted for multiple locations, the EOI shall be provided separately for each location. The EOI shall contain a write-up on the proposed project and providing the details indicated below.

- a) Views on the range of indicative project components, proposed investment, etc

- b) Suggestions on alternative / additional facilities that can be proposed, if any.

- c) Brief description of proposed project

- d) Proposed project components to be listed

- e) Indicative project cost / proposed investment

f) Indicative time line for development of the proposed facilities

g) Indicative likely revenue streams / turnover of project / avenues for returns on investment

h) Tourism potential and benefits (including potential employment generation by project)

i) Feedback on any other concerns / issues, if any are being anticipated and suggestions for mitigating the same.

j) Suggestions / support required (excluding funding) for making this initiative & PPP development a success

8 Schedule V: Mapping of Lighthouses

MAPPING OF LIGHTHOUSES NUMBER OF LIGHTHOUSES – 70

Total Land Lighthouses – 39

Total Island Lighthouses-31

Land Lighthouses		Island Lighthouses	
GUJARAT			
1.	Dwarka	1.	Pirotan N. Point
2.	Veraval	2.	Kalubhar
3.	Mandvi	3.	Piram
4.	Kachchigarh	4.	Savaibet
5.	Gopnath		
6.	Alang		
MAHARASHTRA			
1.	Uttan Point	1.	Vengurla Rock
2.	Korlai Fort	2.	Sao George
3.	Jaigarh		
4.	Ratnagiri		
5.	Umergaon		
6.	Devgad		
7.	Tolkeshwar		
8.	Kanai Creek		
KARNATAKA			
1.	Bhatkal	1.	Oyster Rock
2.	Suratkal		
3.	Kaup		
KERALA			
1.	Chetwai		
2.	Vypin		
3.	Mannakodam		
4.	Vizhinjam		
5.	Thangesseri		
6.	Kannur		
7.	Alleppy		
LAKSHADEEP			
		1.	Kadamat
		2.	Thinakara
		3.	Agathi
		4.	Androth W. End
		5.	Kavaratti
		6.	Suhelipar
		7.	Chetlath
		8.	Kalpeni
		9.	Kiltan

TAMILNADU			
1.	Manappad		
2.	Kilakkarai		
3.	Kodikkarai		
4.	Portonovo		
5.	Pulicat		
PUDUCHERY			
1.	Pondicherry		
ANDHRA PRADESH			
1.	Antervedi	1.	Nagayalanka
2.	Sacramento		
3.	Vakalpudi		
4.	Santapille		
5	Kalingapatnam		
ORISSA			
1.	Gopalpur	1.	False point
2.	Puri		
3.	Paradip		
WEST BENGAL			
1.	Dariyapur	1.	Saugor island
ANDAMAN & NICOBAR ISLAND			
		1.	North point
		2.	North Cinque
		3.	Port Cornowallis
		4.	Sir Huge Rose
		5.	Aves
		6.	East island
		7.	Chidiya Tapu
		8.	Little Andaman
		9.	Rutland
		10.	Keating Point
		11.	South Sentinel
		12.	Narcondum

SALIENT FEATURES

Name of Lighthouse : DWARKA
 Location : Distt- Devbhumi Dwarka /State - Gujarat

S. No.	Factor to be evaluated	Lighthouse specific Lat- 22°14.2'N Long- 68°57.5'E
1.	Size of the Lighthouse (area)	18000 sqm
2.	Status of land freehold/lease etc.	Freehold
3.	Ownership of land	DGLL
4.	Climatic condition- Temp. & rainfall	Temp- 27°C (av) Rainfall- 578mm (av annual)
5.	Tidal range	Not available
6.	History of Natural Disasters	Earthquake in 2002
7.	Distance from nearest port/harbour (if located on an island)	NA
8.	Distance from nearest airport/railhead	Railhead- Dwarka- 3 kms Airport- Jamnagar- 130 kms
9.	Distance from main city located nearby	Dwarka- 2 kms
10.	Availability of roads /access to Lighthouse	Motorable road upto Lighthouse
11.	Availability and facility of public transport	Yes
12.	Existence of natural harbours/berthing facility / landing arrangement (if located on islands)	NA
13.	Telecom coverage and availability of electricity	Yes
14.	Availability of potable water	Yes
15.	Housing infrastructure	Lighthouse tower, staff quarters , power house, inspection qtr, holiday home
16.	Presence of unique flora and fauna	Nil
17.	Presence of natural features- waterfalls, streams, mountains, etc.	Nil
18.	Potential for adventure and water sports	Nil
19.	Presence of local/tribal/folk art	Garbha dance, dandiya dance
20.	Nearest tourist destination and distance	Dwarkadish temple -2 kms Gomti Ghat- 2 kms Byet Dwarka- 31 kms Amphitheatre – 3 kms
21.	In case, tourism has to be developed on PPP mode , then the statutory permissions that would be required and from which agencies	CRZ from MOEF APPProval of Dwarka Town and Country Planning Dept.

SALIENT FEATURES

Name of Lighthouse : VERAVAL
 Location : Distt- Junagad /State- Gujarat

S. No.	Factor to be evaluated	Lighthouse specific Lat- 20°54.6'N Long- 70°21.2'E
1.	Size of the Lighthouse (area)	10000 sqm
2.	Status of land freehold/lease etc.	Freehold
3.	Ownership of land	DGLL
4.	Climatic condition- Temp. & rainfall	Temp- 27°C (av) Rainfall- 578 mm (av annual)
5.	Tidal range	Not available
6.	History of Natural Disasters	Earthquake in 2002
7.	Distance from nearest port/harbour (if located on an island)	NA
8.	Distance from nearest airport/railhead	Railhead- Veraval- 3 kms Airport- Diu- 90 kms
9.	Distance from main city located nearby	Junagad- 86kms
10.	Availability of roads /access to Lighthouse	Motorable road upto Lighthouse
11.	Availability and facility of public transport	Yes
12.	Existence of natural harbours/berthing facility / landing arrangement (if located on islands)	NA
13.	Telecom coverage and availability of electricity	Yes
14.	Availability of potable water	yes
15.	Housing infrastructure	Office , staff qtr , I.Q.
16.	Presence of unique flora and fauna	Nil
17.	Presence of natural features- waterfalls, streams, mountains, etc.	Nil
18.	Potential for adventure and water sports	Nil
19.	Presence of local/tribal/folk art	Garbha dance, dandiya dance
20.	Nearest tourist destination and distance	Somnath Temple- 8 kms Sasan gir (lion safari) – 75 kms Diu beach- 90 kms
21.	In case, tourism has to be developed on PPP mode , then the statutory permissions that would be required and from which agencies	CRZ clearance from MOEF

SALIENT FEATURES

Name of the Lighthouse: MANDVI

Location: Dist.- Kachchh / **State:** Gujarat

Sl. No.	Factor to be evaluated	Lighthouse Specific Lat:22°49.8'N Long:69°20.8'E
1.	Size of the Lighthouse (area)	4180sqm
2.	Status of land freehold/ lease	Free hold
3.	Owner of the land	DGLL
4.	Climatic condition-Temperature & rainfall	Average 36°C,300 mm
5.	Tidal range	4-0.5mtr
6.	History of natural disasters	Earthquake 2001
7.	Distance from nearest port/ harbor(if located on an island)	Nil
8.	Distance from nearest airport/railhead	1.30hr, 75km, Bhuj
9.	Distance from main cities located nearby	60km, Bhuj
10.	Availability of roads/ access to lighthouse	Well connected by road
11.	Availability and facility of public transport	2 Km From LH
12.	Existing of natural harbours/ berthing facility/landing arrangement(if located on island)	Nil
13.	Telecom coverage & availability of Electricity	Connected with BSNL land line. Electricity available from PGVCL
14.	Availability of potable water	Municipality water supply line available
15.	Housing infrastructure	Technical Building, IQ, Staff Qtrs
16.	Presence of unique flora and fauna	Nil
17.	Presence of natural features waterfalls, streams, mountains etc.	Nil
18.	Potential for adventure and water sports	Yes
19.	Presence of local/ tribal/ folk art	Nil
20.	Nearest tourist destination and distance	Ravalpir temple-5km,Swaminarayan temple-2Km, Palace- Km
21.	In case , tourism has to be developed on PPP mode ,then the statutory permission that would be required and from which agencies	CRZ clearance from MOEF

SALIENT FEATURES

Name of Lighthouse : KACHCHHIGARH

Location : Dist- Dwarka Dev Bhoomi, State – Gujarat

Sl No.	Factor to be evaluated	Lighthouse Specific Lat : 22°56.5'N Long: 69°13.9'E
1	Size of lighthouse (Area)	13530 sqm
2	Status of land freehold/lease etc	Freehold
3	Ownership of land	DGLL
4	Climate condition- Temp. And Rainfall	Winter- 14 to 29 deg Summer- 26 to 49 deg Monsoon- Mid June Hot and humid in summer
5	Tidal Range	4.49 meter, Okha Port
6	History of natural disaster	Earthquake, Zone IV
7	Distance from nearest harbour/ port (if located in an island)	N/A
8	Travel time from nearest airport/ rail head	Dwarka, 20 km
9	Distance from main city located nearby	Dwarka, 20 km
10	Availability of roads/ access to the lighthouse	Yes
11	Availability and facility of public transport	Yes
12	Existence of natural harbour/ berthing facility/ landing arrangement (if located on islands)	NA
13	Telecom coverage Availability of electricity	Yes Yes
14	Availability of potable water	Yes
15	Housing infrastructure	IQ, PH Staff quarters- 6 units.
16	Presence of unique flora and fauna	Nil
17	Presence of natural features waterfalls, streams, mountains etc	Nil
18	Potential of adventure and water sport	Yes
19	Presence of indigenous population	Yes
20	Nearest tourist destination and distance	Dwarka, 20 km
21	In case, tourism has to be developed on PPP mode, then the statutory permissions that would be requires and from which agencies	Environmental and CRZ clearance from MoE&F, Gujarat Tourism

SALIENT FEATURES

Name of Lighthouse : GOPNATH

Location : Dist - Bhavnagar, State – Gujarat

Sl No.	Factor to be evaluated	Lighthouse Specific Lat : 21°12.2'N Long: 72°06.6'E
1	Size of lighthouse (Area)	17300 sqm
2	Status of land freehold/lease etc	Freehold
3	Ownership of land	DGLL
4	Climate condition- Temp. And Rainfall	Winter- 14 to 29 deg Summer- 26 to 49 deg Monsoon- Mid June Hot and humid in summer
5	Tidal Range	4 meter
6	History of natural disaster	Earthquake, Zone IV
7	Distance from nearest harbour/ port (if located in an island)	NA
8	Travel time from nearest airport/ rail head	Bhavnagar, 80 km
9	Distance from main city located nearby	Bhavnagar, 80 km
10	Availability of roads/ access to the lighthouse	Yes
11	Availability and facility of public transport	Yes
12	Existence of natural harbour/ berthing facility/ landing arrangement (if located on islands)	NA
13	Telecom coverage Availability of electricity	Yes Yes
14	Availability of potable water	Well
15	Housing infrastructure	IQ,PH , Staff quarters-6units
16	Presence of unique flora and fauna	Nil
17	Presence of natural features waterfalls, streams, mountains etc	Nil
18	Potential of adventure and water sport	Yes
19	Presence of indigenous population	Yes
20	Nearest tourist destination and distance	Tourist place
21	In case, tourism has to be developed on PPP mode, then the statutory permissions that would be requires and from which agencies	Environmental and CRZ clearance from MoE&F, Gujarat Tourism

SALIENT FEATURES

Name of Lighthouse : ALANG LIGHTHOUSE

Location : Dist - Bhavnagar, State- Gujarat

Sl No.	Factor to be evaluated	Lighthouse Specific Lat : 21°24.2'N Long: 72°11.1'E
1	Size of lighthouse (Area)	52100 sqm
2	Status of land freehold/lease etc	Freehold
3	Ownership of land	DGLL
4	Climate condition- Temp. And Rainfall	Winter- 14 to 29 deg Summer- 26 to 49 deg Monsoon- Mid June Hot and humid in summer
5	Tidal Range	4 meter
6	History of natural disaster	Earthquake, Zone IV
7	Distance from nearest harbour/ port (if located in an island)	NA
8	Travel time from nearest airport/ rail head	Bhavnagar, 60 km
9	Distance from main city located nearby	Bhavnagar, 60 km
10	Availability of roads/ access to the lighthouse	Yes
11	Availability and facility of public transport	Yes
12	Existence of natural harbour/ berthing facility/ landing arrangement (if located on islands)	NA
13	Telecom coverage Availability of electricity	Yes Yes
14	Availability of potable water	Well
15	Housing infrastructure	Staff quarters- 4nos.
16	Presence of unique flora and fauna	No
17	Presence of natural features waterfalls, streams, mountains etc	No
18	Potential of adventure and water sport	No
19	Presence of indigenous population	Yes
20	Nearest tourist destination and distance	Biggest ship breaking yard, 2 km
21	In case, tourism has to be developed on PPP mode, then the statutory permissions that would be requires and from which agencies	Environmental and CRZ clearance from MoE&F, Gujarat Tourism

SALIENT FEATURES

Name of Lighthouse : PIROTAN ISLAND
 Location : Jamnagar district, Gujarat

Sl No.	Factor to be evaluated	Lighthouse Specific Lat : 22°36.2'N Long: 69°57.1'E
1	Size of lighthouse (Area)	6760 sqm
2	Status of land freehold/lease etc	Freehold
3	Ownership of land	DGLL
4	Climate condition- Temp. And Rainfall	Winter- 14 to 29 deg Summer- 26 to 49 deg Monsoon- Mid June Hot and humid in summer
5	Tidal Range	4.17 meter, Salaya Channel
6	History of natural disaster	Earthquake, Zone IV
7	Distance from nearest harbour/ port (if located in an island)	Bedi Port, 12 Nautical Miles
8	Travel time from nearest airport/ rail head	Jamnagar 4 km from Bedi Port
9	Distance from main city located nearby	Jamnagar, 4 km
10	Availability of roads/ access to the lighthouse	By Boat, 12 Nautical Miles
11	Availability and facility of public transport	NIL
12	Existence of natural harbour/ berthing facility/ landing arrangement (if located on islands)	Yes for small boats only
13	Telecom coverage Availability of electricity	Yes Generator & Solar Power
14	Availability of potable water	Rain Water Harvesting
15	Housing infrastructure	Staff quarters- 4 Units.
16	Presence of unique flora and fauna	Yes
17	Presence of natural features waterfalls, streams, mountains etc	Marine National Park
18	Potential of adventure and water sport	Yes
19	Presence of indigenous population	No
20	Nearest tourist destination and distance	Jamnagar 4 km from Bedi Port
21	In case, tourism has to be developed on PPP mode, then the statutory permissions that would be requires and from which agencies	Environmental and CRZ clearance from MoE&F, Gujarat Tourism

SALIENT FEATURES

Name of Lighthouse : KALUBHAR ISLAND
 Location : Near Chudeshwar Town, Gujarat

Sl No.	Factor to be evaluated	Lighthouse Specific Lat : 22°26.3'N Long:69°35.2'E
1	Size of lighthouse (Area)	773 sqm
2	Status of land freehold/lease etc	Freehold
3	Ownership of land	DGLL
4	Climate condition- Temp. And Rainfall	Winter- 14 to 29 deg Summer- 26 to 49 deg Monsoon- Mid June Hot and humid in summer
5	Tidal Range	4.17 meter, Salaya Channel
6	History of natural disaster	Earthquake, Zone IV
7	Distance from nearest harbour/ port (if located in an island)	Salaya Port, 12 km
8	Travel time from nearest airport/ rail head	Khambhalia 11 km from Salaya Port
9	Distance from main city located nearby	Khambhalia, 11 km
10	Availability of roads/ access to the lighthouse	By Boat, 8 Nautical Miles
11	Availability and facility of public transport	Nil
12	Existence of natural harbour/ berthing facility/ landing arrangement (if located on islands)	Yes for small boats only
13	Telecom coverage Availability of electricity	Yes Solar Power
14	Availability of potable water	Rain Water Harvesting
15	Housing infrastructure	Nil
16	Presence of unique flora and fauna	Nil
17	Presence of natural features waterfalls, streams, mountains etc	Nil
18	Potential of adventure and water sport	Nil
19	Presence of indigenous population	Nil
20	Nearest tourist destination and distance	Nil
21	In case, tourism has to be developed on PPP mode, then the statutory permissions that would be requires and from which agencies	Environmental and CRZ clearance from MoE&F, Gujarat Tourism

SALIENT FEATURES

Name of Lighthouse : PIRAM ISLAND

Location : Dist - Bhavnagar, State - Gujarat

Sl No.	Factor to be evaluated	Lighthouse Specific Lat : 21°35.9'N Long:72°21.2'E
1	Size of lighthouse (Area)	25255 sqm
2	Status of land freehold/lease etc	Freehold
3	Ownership of land	DGLL
4	Climate condition- Temp. And Rainfall	Winter- 14 to 29 deg Summer- 26 to 49 deg Monsoon- Mid June Hot and humid in summer
5	Tidal Range	4.0 meter
6	History of natural disaster	Earthquake,
7	Distance from nearest harbour/ port (if located in an island)	Gogha Jetty, 7 nautical mile
8	Travel time from nearest airport/ rail head	Bhavnagar, 40 km from Gogha
9	Distance from main city located nearby	Bhavnagar, 40 km from Gogha
10	Availability of roads/ access to the lighthouse	By small boats from Gogha Jetty
11	Availability and facility of public transport	Nil
12	Existence of natural harbour/ berthing facility/ landing arrangement (if located on islands)	For small boats only
13	Telecom coverage Availability of electricity	Yes Generator & Solar Power
14	Availability of potable water	Rain Water Harvesting
15	Housing infrastructure	Staff quarters- 2 units.
16	Presence of unique flora and fauna	Nil
17	Presence of natural features waterfalls, streams, mountains etc	Nil
18	Potential of adventure and water sport	Yes
19	Presence of indigenous population	Nil
20	Nearest tourist destination and distance	Bhavnagar, 40km from Gogha
21	In case, tourism has to be developed on PPP mode, then the statutory permissions that would be requires and from which agencies	Environmental and CRZ clearance from MoEF, Gujarat Tourism

SALIENT FEATURES

Name of Lighthouse : SAVAIBET
 Location : Dist - Amreli, State- Gujarat

Sl No.	Factor to be evaluated	Lighthouse Specific Lat : 20°54.2'N Long: 71°31.6'E
1	Size of lighthouse (Area)	6750 sqm
2	Status of land freehold/lease etc	Freehold
3	Ownership of land	DGLL
4	Climate condition- Temp. And Rainfall	Winter- 14 to 29 deg Summer- 26 to 49 deg Monsoon- Mid June Hot and humid in summer
5	Tidal Range	3.6 meter
6	History of natural disaster	Earthquake, Zone IV
7	Distance from nearest harbour/ port (if located in an island)	Pipava Port ,3 Nautical
8	Travel time from nearest airport/ rail head	Veraval, 98 km from Pipava port
9	Distance from main city located nearby	Veraval, 98 km from Pipava port
10	Availability of roads/ access to the lighthouse	No
11	Availability and facility of public transport	Small Boats
12	Existence of natural harbour/ berthing facility/ landing arrangement (if located on islands)	Small boats only
13	Telecom coverage Availability of electricity	Yes Generator & Solar Power
14	Availability of potable water	Rain Water Harvesting
15	Housing infrastructure	Staff quarters- 3nos.
16	Presence of unique flora and fauna	Nil
17	Presence of natural features waterfalls, streams, mountains etc	Nil
18	Potential of adventure and water sport	Nil
19	Presence of indigenous population	Nil
20	Nearest tourist destination and distance	Somnath, 105 km from Pipava port
21	In case, tourism has to be developed on PPP mode, then the statutory permissions that would be requires and from which agencies	Environmental and CRZ clearance from MoE&F, Gujarat Tourism

SALIENT FEATURES

Name of Lighthouse : UTTAN POINT
 Location : Dist. Thane, State- Maharashtra

Sl. No.	Factor to be evaluated	Lighthouse specific Lat : 19°16.5'N Long : 72°46.8'E
1.	Size of the Lighthouse (area)	46500 Sq. Meter
2.	Status of land freehold/lease etc.	Freehold
3.	Ownership of land	DGLL
4.	Climatic condition- Temp. & rainfall	Av. Temp 38°C, Rainfall Average 2000-3000 mm (annual)
5.	Tidal range	Range – 02 m to 08 m. LH is situated about 0.5 Km away from shoreline.
6.	History of Natural Disasters	NIL
7.	Distance from nearest port/harbour (if located on an island)	NA
8.	Distance from nearest airport/railhead	Rail - Bhayander - 10 kms Airport - Mumbai - 40 kms
9.	Distance from main city located nearby	Bhayander - 10 kms
10.	Availability of roads /access to Lighthouse	Motorable road upto Lighthouse
11.	Availability and facility of public transport	Bus service upto Lighthouse
12.	Existence of natural harbours/berthing facility / landing arrangement (if located on island)	NA
13.	Telecom coverage and availability of electricity	BSNL & All Leading Mobile Operators, Electricity from BSES
14.	Availability of potable water	PWD water supply and rain water storage tank
15.	Housing infrastructure	I.Q.PH, store room & staff qtr – 8 units
16.	Presence of unique flora and fauna	NIL
17.	Presence of natural features- waterfalls, streams, mountains, etc.	NIL
18.	Potential for adventure and water sports	NIL
19.	Presence of local/tribal/folk art	NIL
20.	Nearest tourist destination and distance	Valankini Temple – 03 kms, Uttan Beach – Near to LH, Essel World & Water Kingdom – 22 Kms
21.	In case, tourism has to be developed on PPP mode , then the statutory permissions that would be required and from which agencies	CRZ clearance from MOEF and local bodies

SALIENT FEATURES

Name of Lighthouse : KORLAI FORT
 Location: : Dist.- Raigadh State - Maharashtra

Sl. No.	Factor to be evaluated	Lighthouse specific Lat : 18°32.3'N Long : 72°54.5'E
1.	Size of the Lighthouse (area)	60700 Sq. Meter
2.	Status of land freehold/lease etc.	Freehold
3.	Ownership of land	DGLL
4.	Climatic condition- Temp. & rainfall	Av. Temp 32°C, Rainfall Average 2000-4000 mm (annual)
5.	Tidal range	Range – 03 m to 08 m.
6.	History of Natural Disasters	NIL
7.	Distance from nearest port/harbour (if located on an island)	NA
8.	Distance from nearest airport/railhead	Rail - Panvel – 81 Kms. to LH Airport - 120 Kms. LH
9.	Distance from main city located nearby	Alibag - 25 Kms. from LH
10.	Availability of roads /access to Lighthouse	Motorable road upto LH
11.	Availability and facility of public transport	Bus Service 3 kms away from LH
12.	Existence of natural harbours/berthing facility / landing arrangement (if located on islands)	NA
13.	Telecom coverage and availability of electricity	BSNL & All Leading Mobile Operators, MSEB Power Supply
14.	Availability of potable water	Open Well Water Supply
15.	Housing infrastructure	IQ,P H, office , Staff Qtrs – 05 units
16.	Presence of unique flora and fauna	NIL
17.	Presence of natural features- waterfalls, streams, mountains, etc.	NIL
18.	Potential for adventure and water sports	NIL
19.	Presence of local/tribal/folk art	NIL
20.	Nearest tourist destination and distance	Korlai Fort – Near to LH
21.	In case, tourism has to be developed on PPP mode , then the statutory permissions that would be required and from which agencies	CRZ clearance from MOEF and local bodies.

SALIENT FEATURES

Name of Lighthouse : JAIGARH
 Location : Dist. Ratnagiri/ State – Maharashtra

Sl. No.	Factor to be evaluated	Lighthouse specific Lat : 17°17.8'N Long : 73°11.6'E
1.	Size of the Lighthouse (area)	18000 Sq. Meter
2.	Status of land freehold/lease etc.	Freehold
3.	Ownership of land	DGLL
4.	Climatic condition- Temp. & rainfall	Av. Temp 32°C, Rainfall Average 2000-4000 mm (annual)
5.	Tidal range	Range – 03 m to 08 m.
6.	History of Natural Disasters	NIL
7.	Distance from nearest port/harbour (if located on an island)	NA
8.	Distance from nearest airport/railhead	Rail - Ratnagiri – 50 Kms. Airport – Goa - 310 Kms.
9.	Distance from main city located nearby	Ratnagiri - 55 Kms. from LH
10.	Availability of roads /access to Lighthouse	Motorable road upto LH
11.	Availability and facility of public transport	Bus Service 06 Kms away from LH
12.	Existence of natural harbours/berthing facility / landing arrangement (if located on	NIL
13.	Telecom coverage and availability of electricity	BSNL & All Leading Mobile Operators, MSEB Power Supply
14.	Availability of potable water	Open Well Water Supply
15.	Housing infrastructure	IQ,PH , Staff qtr – 05 units
16.	Presence of unique flora and fauna	Nil
17.	Presence of natural features- waterfalls, streams, mountains, etc.	Nil
18.	Potential for adventure and water sports	Nil
19.	Presence of local/tribal/folk art	Nil
20.	Nearest tourist destination and distance	Jaigad Fort – 06 kms. Ganpati Phule Temple & Beach – 25 Kms
21.	In case, tourism has to be developed on PPP mode , then the statutory permissions that would be required and from which agencies	CRZ clearance from MOEF and local bodies.

SALIENT FEATURES

Name of Lighthouse : RATNAGIRI
 Location : Dist. Ratnagiri / State - Maharashtra.

Sl. No.	Factor to be evaluated	Lighthouse specific Lat : 16°59.2'N Long : 73°16.4'E
1.	Size of the Lighthouse (area)	11820 Sq. Meter
2.	Status of land freehold/lease etc.	Freehold
3.	Ownership of land	DGLL
4.	Climatic condition- Temp. & rainfall	Av. Temp 32°C, Rainfall Average 2000-4000 mm (annual)
5.	Tidal range	Range – 03 m to 08 m.
6.	History of Natural Disasters	NIL
7.	Distance from nearest port/harbour (if located on an island)	NA
8.	Distance from nearest airport/railhead	Rail - Ratnagiri – 14 Kms. Airport – Goa - 260 Kms.
9.	Distance from main city located nearby	Ratnagiri - 05 Kms.
10.	Availability of roads /access to Lighthouse	Motorable road upto LH
11.	Availability and facility of public transport	Bus Service upto Kms away from LH
12.	Existence of natural harbours/berthing facility / landing arrangement (if located on islands)	NIL
13.	Telecom coverage and availability of electricity	BSNL & All Leading Mobile Operators, MSEB Power Supply
14.	Availability of potable water	Open Well Water Supply & Municipal Water Supply
15.	Housing infrastructure	IQ, PH , Staff qtr – 07 units
16.	Presence of unique flora and fauna	NIL
17.	Presence of natural features- waterfalls, streams, mountains, etc.	NIL
18.	Potential for adventure and water sports	NIL
19.	Presence of local/tribal/folk art	NIL
20.	Nearest tourist destination and distance	Bhagwati Temple – 01 kms,Mandovi Beach – 02 Kms,Bhatya Beach – 04 Kms,Ganpati Phule Temple & Beach – 30 Kms
21.	In case, tourism has to be developed on PPP mode , then the statutory permissions that would be required and from which agencies	CRZ clearance from MOEF and local bodies.

SALIENT FEATURES

Name of Lighthouse : UMARGAON
 Location : Distt. Valsad, State – Gujarat

Sl. No.	Factor to be evaluated	Lighthouse specific Lat : 20°11.7'N Long : 72°45.0'E
1.	Size of the Lighthouse (area)	3000 Sq. Meter
2.	Status of land freehold/lease etc.	Freehold
3.	Ownership of land	DGLL
4.	Climatic condition- Temp. & rainfall	Av. Temp 35°C, Rainfall Average 2000-3000 mm (annual)
5.	Tidal range	Range – 02 m to 08 m.
6.	History of Natural Disasters	NIL
7.	Distance from nearest port/harbour (if located on an island)	NA
8.	Distance from nearest airport/railhead	Rail - Umargam - 10 kms Airport - Surat - 154 kms
9.	Distance from main city located nearby	Umargam - 10 kms
10.	Availability of roads /access to Lighthouse	Motorable road upto Lighthouse
11.	Availability and facility of public transport	Bus service upto 0.5 kms. Away from Lighthouse
12.	Existence of natural harbours/berthing facility / landing arrangement (if located on	NA
13.	Telecom coverage and availability of electricity	BSNL Telephone connection, electricity supply from DGVCL
14.	Availability of potable water	Well & Gram Panchayat Water Supply
15.	Housing infrastructure	I.Q, staff qtr- 04 units Office / Store room
16.	Presence of unique flora and fauna	NIL
17.	Presence of natural features- waterfalls, streams, mountains, etc.	NIL
18.	Potential for adventure and water sports	NIL
19.	Presence of local/tribal/folk art	NIL
20.	Nearest tourist destination and distance	Umargam Beach – 1 kms. Vrindavan Studio – 6 kms.
21.	In case, tourism has to be developed on PPP mode , then the statutory permissions that would be required and from which agencies	CRZ clearance from MOEF and local bodies.

SALIENT FEATURES

Name of Lighthouse : DEVGAD
 Location : Dist. Sindhudurg, State – Maharashtra

Sl. No.	Factor to be evaluated	Lighthouse specific Lat : 16°23.3'N Long : 73°22.6'E
1.	Size of the Lighthouse (area)	9910 Sq. Meter
2.	Status of land freehold/lease etc.	Freehold
3.	Ownership of land	DGLL
4.	Climatic condition- Temp. & rainfall	Av. Temp 32°C, Rainfall Average 2000-4000 mm (annual)
5.	Tidal range	Range – 03 m to 08 m.
6.	History of Natural Disasters	NIL
7.	Distance from nearest port/harbour (if located on an island)	NA
8.	Distance from nearest airport/railhead	Rail - Kankavali – 60 Kms. Airport – Goa - 200 Kms.
9.	Distance from main city located nearby	Devgad - 05 Kms.
10.	Availability of roads /access to Lighthouse	Motorable road upto LH
11.	Availability and facility of public transport	Bus Service upto 05 Kms away from LH
12.	Existence of natural harbours/berthing facility / landing arrangement (if located on	NA
13.	Telecom coverage and availability of electricity	BSNL & All Leading Mobile Operators, MSEB Power Supply
14.	Availability of potable water	Open Well Water Supply
15.	Housing infrastructure	IQ. PH , Staff qtr- 05 units
16.	Presence of unique flora and fauna	NIL
17.	Presence of natural features- waterfalls, streams, mountains, etc.	NIL
18.	Potential for adventure and water sports	NIL
19.	Presence of local/tribal/folk art	NIL
20.	Nearest tourist destination and distance	Devgad Fort – Near LH Kunkeshwar Temple – 25 kms.
21.	In case, tourism has to be developed on PPP mode , then the statutory permissions that would be required and from which agencies	CRZ clearance from MOEF and local bodies.

SALIENT FEATURES

Name of Lighthouse : TOLKESHWAR
 Location : Dist. Ratnagiri, State - Maharashtra

Sl. No.	Factor to be evaluated	Lighthouse specific Lat : 17°33.9'N Long : 73°08.5'E
1.	Size of the Lighthouse (area)	2500 Sq. Meter
2.	Status of land freehold/lease etc.	Freehold
3.	Ownership of land	DGLL
4.	Climatic condition- Temp. & rainfall	Av. Temp 32°C, Rainfall Average 2000-4000 mm (annual)
5.	Tidal range	Range – 03 m to 08 m.
6.	History of Natural Disasters	NIL
7.	Distance from nearest port/harbour (if located on an island)	NA
8.	Distance from nearest airport/railhead	Rail - Chiplun – 60 Kms. Airport – Mumbai - 320 Kms. to LH
9.	Distance from main city located nearby	Chiplun - 60 Kms. from LH
10.	Availability of roads /access to Lighthouse	Motorable road upto LH
11.	Availability and facility of public transport	Bus Service upto 05 Kms away from LH
12.	Existence of natural harbours/berthing facility / landing arrangement (if located on islands)	NA
13.	Telecom coverage and availability of electricity	BSNL & All Leading Mobile Operators, MSEB Power Supply
14.	Availability of potable water	Open Well Water Supply
15.	Housing infrastructure	IQ, staff qtr- 05 units
16.	Presence of unique flora and fauna	NIL
17.	Presence of natural features- waterfalls, streams, mountains, etc.	NIL
18.	Potential for adventure and water sports	NIL
19.	Presence of local/tribal/folk art	NIL
20.	Nearest tourist destination and distance	Tolkeshwar Fort – 02 kms.
21.	In case, tourism has to be developed on PPP mode , then the statutory permissions that would be required and from which agencies	CRZ clearance from MOEF and local bodies.

SALIENT FEATURES

Name of Lighthouse : KANAI CREEK
 Location : Dist. Navasari, State- Guharat

Sl. No.	Factor to be evaluated	Lighthouse specific Lat: 20°48.7'N Long: 72°49.7'E
1.	Size of the Lighthouse (area)	10000 Sq. Meter
2.	Status of land freehold/lease etc.	Freehold
3.	Ownership of land	DGLL
4.	Climatic condition- Temp. & rainfall	Av. Temp 35°C, Rainfall Average 2000-3000 mm (annual)
5.	Tidal range	Range – 02 m to 08 m. LH is situated about 500 Mtr. from shoreline.
6.	History of Natural Disasters	NIL
7.	Distance from nearest port/harbour (if located on an island)	NA
8.	Distance from nearest airport/railhead	Rail - Navsari - 25 kms Airport - Surat - 72 kms
9.	Distance from main city located nearby	Navsari - 22 kms
10.	Availability of roads /access to Lighthouse	Motorable road upto Lighthouse
11.	Availability and facility of public transport	Bus service upto 0.5 kms. away from Lighthouse
12.	Existence of natural harbours/berthing facility / landing arrangement (if located on islands)	NA
13.	Telecom coverage and availability of electricity	BSNL Telephone connection, electricity supply from DGVCL
14.	Availability of potable water	Well Water
15.	Housing infrastructure	I.Q, PH, staff qtr- 04 units
16.	Presence of unique flora and fauna	NIL
17.	Presence of natural features- waterfalls, streams, mountains, etc.	NIL
18.	Potential for adventure and water sports	NIL
19.	Presence of local/tribal/folk art	NIL
20.	Nearest tourist destination and distance	Dandi – 15 kms.
21.	In case, tourism has to be developed on PPP mode , then the statutory permissions that would be required and from which agencies	CRZ clearance from MOEF

SALIENT FEATURES

Name of Lighthouse : VENGURLA ROCKS (ISLAND STATION)

Location : Distt. Sindhudurg, state -Maharashtra

Sl. No.	Factor to be evaluated	Lighthouse specific Lat : 15°53.4'N Long : 73°27.7'E
1.	Size of the Lighthouse (area)	NA
2.	Status of land freehold/lease etc.	Freehold
3.	Ownership of land	DGLL
4.	Climatic condition- Temp. & rainfall	Av. Temp 31°C, Av. Rainfall Average 2000-4000 mm (annual)
5.	Tidal range	Range – 03 m to 08 m.
6.	History of Natural Disasters	NIL
7.	Distance from nearest port/harbour (if located on an island)	1 hour from Nivti Jetty
8.	Distance from nearest airport/railhead	Rail - Kudal – 25 Kms. Airport – Goa - 100 Kms.
9.	Distance from main city located nearby	Vengurla - 25 Kms.
10.	Availability of roads /access to Lighthouse	NA
11.	Availability and facility of public transport	NIL
12.	Existence of natural harbours/berthing facility / landing arrangement (if located on island)	NIL
13.	Telecom coverage and availability of electricity	BSNL & All Leading Mobile Operators, Solar Power
14.	Availability of potable water	Rain Water storage tanks
15.	Housing infrastructure	I,Q, P.H, store room , staff qtr- 05 units
16.	Presence of unique flora and fauna	NIL
17.	Presence of natural features- waterfalls, streams, mountains, etc.	NIL
18.	Potential for adventure and water sports	NIL
19.	Presence of local/tribal/folk art	NIL
20.	Nearest tourist destination and distance	NA
21.	In case, tourism has to be developed on PPP mode , then the statutory permissions that would be required and from which agencies	CRZ clearance from MOEF and local bodies.

SALIENT FEATURES

Name of Lighthouse : SAO GEORGE (ISLAND STATION)
 Location : Near Aguada LH , Goa

Sl. No.	Factor to be evaluated	Lighthouse specific Lat : 15°21.1'N Long : 73°45.8'E
1.	Size of the Lighthouse (area)	NA
2.	Status of land freehold/lease etc.	Freehold
3.	Ownership of land	DGLL
4.	Climatic condition- Temp. & rainfall	Av. Temp 30°C, Rainfall Average 2000-4000 mm (annual)
5.	Tidal range	Range – 03 m to 08 m.
6.	History of Natural Disasters	NIL
7.	Distance from nearest port/harbour (if located on an island)	6.5 Kms. from Mormugao Port
8.	Distance from nearest airport/railhead	Rail - Murmogoia – 30 Kms. Airport – Goa - 15 Kms.
9.	Distance from main city located nearby	Vasco - 8 Kms. from LH
10.	Availability of roads /access to Lighthouse	NA
11.	Availability and facility of public transport	NA
12.	Existence of natural harbours/berthing facility / landing arrangement (if located on islands)	Nil
13.	Telecom coverage and availability of electricity	BSNL & All Leading Mobile Operators, Solar power
14.	Availability of potable water	NA
15.	Housing infrastructure	NA
16.	Presence of unique flora and fauna	NIL
17.	Presence of natural features- waterfalls, streams, mountains, etc.	NIL
18.	Potential for adventure and water sports	NIL
19.	Presence of local/tribal/folk art	NIL
20.	Nearest tourist destination and distance	Vasco – da – Gama fort - 7 Kms.
21.	In case, tourism has to be developed on PP mode , then the statutory permissions that would be required and from which agencies	CRZ clearance from MOEF and local bodies.

SALIENT FEATURES

Name of Lighthouse : BHATKAL
 Location : Dist- North Kanara , State- Karnataka

Sl. No.	Factor to be evaluated	Lighthouse specific Lat : 13°57.9'N Long : 74°32.0'E
1.	Size of the Lighthouse (area)	Land Area – 6780 Sq. Meter
2.	Status of land freehold/lease etc.	Freehold
3.	Ownership of land	DGLL
4.	Climatic condition- Temp. & rainfall	Av. Temp 32°C, Rainfall Average 2000-4000 mm (annual)
5.	Tidal range	Range – 03 m to 08 m.
6.	History of Natural Disasters	NIL
7.	Distance from nearest port/harbour (if located on an island)	NA
8.	Distance from nearest airport/railhead	Rail - Bhatkal – 10 Kms. Airport – Manglore - 160 Kms.
9.	Distance from main city located nearby	Bhatkal city 7 Kms
10.	Availability of roads /access to Lighthouse	Motorable road upto staff quarter
11.	Availability and facility of public transport	Bus Service upto 1 Km away from LH
12.	Existence of natural harbours/berthing facility / landing arrangement (if located on islands)	NA
13.	Telecom coverage and availability of electricity	BSNL & All Leading Mobile Operators, Karnataka Electricity Board Power Supply
14.	Availability of potable water	Spring Water
15.	Housing infrastructure	PH, IQ, store room, staff qtr- 06 units
16.	Presence of unique flora and fauna	NIL
17.	Presence of natural features- waterfalls, streams, mountains, etc.	NIL
18.	Potential for adventure and water sports	NIL
19.	Presence of local/tribal/folk art	NIL
20.	Nearest tourist destination and distance	Byndoor Beach 21 Kms from LH Murudeshwar Temple 16 Kms from LH
21.	In case, tourism has to be developed on PPP mode , then the statutory permissions that would be required and from which agencies	CRZ clearance from MOEF and local bodies.

SALIENT FEATURES

Name of Lighthouse : SURATKAL
 Location : Dist: South Kanara, State - Karnataka.

Sl. No.	Factor to be evaluated	Lighthouse specific Lat : 13°00.2'N Long : 74°47.4'E
1.	Size of the Lighthouse (area)	Land Area – 5337 Sq. Meter
2.	Status of land freehold/lease etc.	Freehold
3.	Ownership of land	DGLL
4.	Climatic condition- Temp. & rainfall	Av. Temp 34°C, Av. Rainfall Average 2000-4000 mm (annual)
5.	Tidal range	Range – 03 m to 09 m.
6.	History of Natural Disasters	NIL
7.	Distance from nearest port/harbour (if located on an island)	NA
8.	Distance from nearest airport/railhead	Rail - Suratkal – 5 Kms. Airport – Manglore - 35 Kms.
9.	Distance from main city located nearby	Suratkal 05 Kms
10.	Availability of roads /access to Lighthouse	Motorable upto LH
11.	Availability and facility of public transport	Bus Service upto 1 kms. away from LH
12.	Existence of natural harbours/berthing facility / landing arrangement (if located on islands)	NA
13.	Telecom coverage and availability of electricity	BSNL & All Leading Mobile Operators, Karnataka Electric Board
14.	Availability of potable water	Municipal Water Supply & Open Well
15.	Housing infrastructure	IQ, PH, Store Room , staff qtr- 06 units
16.	Presence of unique flora and fauna	NIL
17.	Presence of natural features- waterfalls, streams, mountains, etc.	NIL
18.	Potential for adventure and water sports	NIL
19.	Presence of local/tribal/folk art	NIL
20.	Nearest tourist destination and distance	Tourist spot
21.	In case, tourism has to be developed on PPP mode , then the statutory permissions that would be required and from which agencies	CRZ clearance from MOEF and local bodies.

SALIENT FEATURES

Name of Lighthouse : KAUP
 Location : Distt. Udupi, State – Karnataka

Sl. No.	Factor to be evaluated	Lighthouse specific Lat : 13°13.4'N Long : 74°44.2'E
1.	Size of the Lighthouse (area)	Land Area – 11501 Sq. Meter
2.	Status of land freehold/lease etc.	Freehold
3.	Ownership of land	DGLL
4.	Climatic condition- Temp. & rainfall	Av. Temp 34°C, Av. Rainfall Average 2000-4000 mm (annual)
5.	Tidal range	Range – 03 m to 09 m.
6.	History of Natural Disasters	NIL
7.	Distance from nearest port/harbour (if located on an island)	NA
8.	Distance from nearest airport/railhead	Rail - Kaup – 8 Kms. Airport – Manglore - 50 Kms.
9.	Distance from main city located nearby	Udupi 13 Kms
10.	Availability of roads /access to Lighthouse	Motorable upto LH
11.	Availability and facility of public transport	Bus Service upto LH
12.	Existence of natural harbours/berthing facility / landing arrangement (if located on islands)	NA
13.	Telecom coverage and availability of electricity	BSNL & All Leading Mobile Operators, Solar power
14.	Availability of potable water	Open well
15.	Housing infrastructure	IQ, PH,staff qtr- 05 units
16.	Presence of unique flora and fauna	NIL
17.	Presence of natural features- waterfalls, streams, mountains, etc.	NIL
18.	Potential for adventure and water sports	NIL
19.	Presence of local/tribal/folk art	NIL
20.	Nearest tourist destination and distance	Tourist spot
21.	In case, tourism has to be developed on PPP mode , then the statutory permissions that would be required and from which agencies	CRZ clearance from MOEF and local bodies.

SALIENT FEATURES

Name of Lighthouse : OYSTER ROCK (ISLAND STATION)

Location : Dist. Kanera, State – Karnataka

Sl. No.	Factor to be evaluated	Lighthouse specific Lat : 14°49.2'N Long : 74°03.7'E
1.	Size of the Lighthouse (area)	Land Area – 18000 Sq. m
2.	Status of land freehold/lease etc.	Freehold
3.	Ownership of land	DGLL
4.	Climatic condition- Temp. & rainfall	Av. Temp 35°C, Rainfall Average 2000-4000 mm (annual)
5.	Tidal range	Range – 03 m to 08 m.
6.	History of Natural Disasters	NIL
7.	Distance from nearest port/harbour (if located on an island)	45 min. journey from Karwar Jetty
8.	Distance from nearest airport/railhead	Rail - Karwar – 15 Kms. Airport – Goa - 120 Kms.
9.	Distance from main city located nearby	Karwar - 4 Kms. from Karwar Jetty
10.	Availability of roads /access to Lighthouse	NA
11.	Availability and facility of public transport	Bus Service upto Karwar Jetty
12.	Existence of natural harbours/berthing facility / landing arrangement (if located on islands)	NA
13.	Telecom coverage and availability of electricity	BSNL & All Leading Mobile Operators, Solar Power
14.	Availability of potable water	Rain Harvesting Tanks
15.	Housing infrastructure	IQ, Store room , staff qtr- 05 units
16.	Presence of unique flora and fauna	NIL
17.	Presence of natural features- waterfalls, streams, mountains, etc.	NIL
18.	Potential for adventure and water sports	NIL
19.	Presence of local/tribal/folk art	NIL
20.	Nearest tourist destination and distance	Devbagh Beach – 3 Kms. From Karwar Jetty Warship museum – 3 Kms. From Karwar Jetty
21.	In case, tourism has to be developed on PPP mode , then the statutory permissions that would be required and from which agencies	CRZ clearance from MOEF and local bodies.

SALIENT FEATURES

Name of Lighthouse : CHETWAI
 Location : District :Trissur,/ State – Kerala

Sl. No	Factors to be evaluated	Lighthouse specific
1	Size of the Lighthouse (Area)	0.3606 Hectors
2	Status of the land , Freehold/lease etc	Freehold
3	Ownership of the lad	DGLL
4	Climatic condition – Temperature& Rainfall	22.00 to 32.90 C. 329mm
5	Tidal range	0.60m
6	History of natural disaster	NIL
7	Distance from nearest Port/Harbour (If located on an island)	NA
8	Distance from nearest Air port/rail head	Calicut Air port -85Km Guruvayur Rly stn.8Km
9	Distance from main cities located nearby	Guruvayur – 8Km
10	Availability of roads/access to Lighthouse	Motorable upto LH
11	Availability and facility of Public transport	Bus service up to Lighthouse
12	Existences of Natural harbour/berthing facility /landing arrangement(If located in the Island)	Ponnani Harbour
13	Telecom coverage and availability of electricity	All networks /KSEB supply available round the clock
14	Availability of potable water	KWA water supply
15	Housing infrastructure	IQ, PH staff qtr- 05 units
16	Presence of unique Flora and fauna	Coconut trees , Flower plants, shade trees
17	Presence of Natural Features ,waterfalls, streams, mountain etc	NIL.
18	Potential of adventure and water sports	Nil
19	Presence of local/tribal/folk arts	Nil
20	Nearest Tourist destination and distance	Guruvayoor temple 8Km
22	In case, Tourism has to be developed on PPP mode , then statutory permission that would be required and from which agency	Orumanayur Grama Panchayath and CRZ from MOEF

SALIENT FEATURES

Name of Lighthouse : VYPIN
 Location : District : Ernakulam/ State - : Kerala

Sl. No	Factors to be evaluated	Lighthouse specific Lat: 09°59.8'N Long: 76°13.3'E
1	Size of the Lighthouse (Area)	0.3167 Hectors
2	Status of the land , Freehold/lease etc	Freehold
3	Ownership of the lad	DGLL
4	Climatic condition – Temperature& Rainfall	22.00 to 32.90 C. 329mm
5	Tidal range	0.60m
6	History of natural disaster	NIL
7	Distance from nearest Port/Harbour (If located on an island)	NA
8	Distance from nearest Air port/rail head	Cochin Air port -45Km Ernakulam Railway stn. 2Km
9	Distance from main cities located nearby	Ernakulam– 12Km
10	Availability of roads/access to Lighthouse	Motorable road upto LH
11	Availability and facility of Public transport	Bus service up to Lighthouse
12	Existences of Natural harbour/berthing facility /landing arrangement(If located in the Island)	NA
13	Telecom coverage and availability of electricity	All networks /KSEB supply available round the clock
14	Availability of potable water	KWA water supply
15	Housing infrastructure	IQ, PH- staff qtrs – 05 units
16	Presence of unique Flora and fauna	Coconut trees , Flower plants, shade trees
17	Presence of Natural Features ,waterfalls, streams, mountain etc	NIL.
18	Potential of adventure and water sports	Nil
19	Presence of local/tribal/folk arts	Nil
20	Nearest Tourist destination and distance	Cherai beach 17Km
22	In case, Tourism has to be developed on PPP mode , then statutory permission that would be required and from which agency	Elamkunnappuzha Grama Panchayath and CRZ from MOEF

SALIENT FEATURES

Name of Lighthouse : MANAKKODAM
 Location : District : Alappuzha /State: Kerala

Sl. No	Factors to be evaluated	Lighthouse specific Lat: 9°45.00'N Long: 76°17.10'E
1	Size of the Lighthouse (Area)	0.6686 Hectors
2	Status of the land , Freehold/lease etc	Freehold
3	Ownership of the lad	DGLL
4	Climatic condition – Temperature& Rainfall	22.00 to 32.90 C. 329mm
5	Tidal range	0.60m
6	History of natural disaster	NIL
7	Distance from nearest Port/Harbour (If located on an island)	NA
8	Distance from nearest Air port/rail head	Cochin Air port -65Km Vayalar Rly stn. 5Km
9	Distance from main cities located nearby	Chertthala– 10Km
10	Availability of roads/access to Lighthouse	Motorable road upto LH
11	Availability and facility of Public transport	Bus service up to Lighthouse
12	Existences of Natural harbour/berthing facility /landing arrangement(If located in the Island)	NA
13	Telecom coverage and availability of electricity	All networks /KSEB supply available round the clock
14	Availability of potable water	KWA water supply
15	Housing infrastructure	Inspection +5 Staff Qrs
16	Presence of unique Flora and fauna	Coconut trees , Flower plants, shade trees
17	Presence of Natural Features ,waterfalls, streams, mountain etc	NIL.
18	Potential of adventure and water sports	Nil
19	Presence of local/tribal/folk arts	Nil
20	Nearest Tourist destination and distance	Anthakaranazhi 500m
22	In case, Tourism has to be developed on PPP mode , then statutory permission that would be required and from which agency	Pattanakkad Grama Panchayath and CRZ from MOEF

SALIENT FEATURES

Name of Lighthouse : VIZHINJAM
 Location : District : Trivandrum /State - : Kerala

Sl. No	Factors to be evaluated	Lighthouse specific 08°22.9'N 76°58.8'E
1	Size of the Lighthouse (Area)	1.7770 Hectors
2	Status of the land , Freehold/lease etc	Freehold
3	Ownership of the lad	DGLL
4	Climatic condition – Temperature& Rainfall	22.00 to 32.90 C. 329mm
5	Tidal range	0.60m
6	History of natural disaster	NIL
7	Distance from nearest Port/Harbour (If located on an island)	NA
8	Distance from nearest Air port/rail head	Trivandrum Air port -12Km Trivandrum Rly stn.15Km
9	Distance from main cities located nearby	Thiruvananthapuram– 12Km
10	Availability of roads/access to Lighthouse	Motorable road upto LH
11	Availability and facility of Public transport	Bus service up to Lighthouse
12	Existences of Natural harbour/berthing facility /landing arrangement(If located in the Island)	NA
13	Telecom coverage and availability of electricity	All networks /KSEB supply available round the clock
14	Availability of potable water	KWA water supply
15	Housing infrastructure	Inspection qrs+5 Staff Qrs
16	Presence of unique Flora and fauna	Coconut trees , Flower plants, shade trees
17	Presence of Natural Features ,waterfalls, streams, mountain etc	NIL.
18	Potential of adventure and water sports	Nil
19	Presence of local/tribal/folk arts	Nil
20	Nearest Tourist destination and distance	Kovalam beach 0 Km
22	In case, Tourism has to be developed on PPP mode , then statutory permission that would be required and from which agency	Corporation of Thruvanathapuram and CRZ from MOEF

SALIENT FEATURES

Name of Lighthouse : THANGASERRY
 Location : District : KOLLAM /State - : Kerala

Sl. No	Factors to be evaluated	Lighthouse specific Lat: 08°52.7'N Long: 76°34.0'E
1	Size of the Lighthouse (Area)	0.4161 Hectors
2	Status of the land , Freehold/lease etc	Freehold
3	Ownership of the lad	DGLL
4	Climatic condition – Temperature& Rainfall	22.00 to 32.90 C. 329mm
5	Tidal range	0.60m
6	History of natural disaster	NIL
7	Distance from nearest Port/Harbour (If located on an island)	NA
8	Distance from nearest Air port/rail head	Trivandrum Air port -65Km Kollamr Rly stn. 6Km
9	Distance from main cities located nearby	Kollam– 6Km
10	Availability of roads/access to Lighthouse	PWD road
11	Availability and facility of Public transport	Bus service up to Lighthouse
12	Existences of Natural harbour/berthing facility /landing arrangement(If located in the Island)	Thangasery Harbour
13	Telecom coverage and availability of electricity	All networks /KSEB supply available round the clock
14	Availability of potable water	KWA water supply
15	Housing infrastructure	Inspection +5 Staff Qrs
16	Presence of unique Flora and fauna	Coconut trees , Flower plants, shade trees
17	Presence of Natural Features ,waterfalls, streams, mountain etc	NIL.
18	Potential of adventure and water sports	Nil
19	Presence of local/tribal/folk arts	Nil
20	Nearest Tourist destination and distance	Thangasery/Asram5Km
22	In case, Tourism has to be developed on PPP mode , then statutory permission that would be required and from which agency	Corporation of Kollam and CRZ from MOEF

SALIENT FEATURES

Name of Lighthouse : KANNUR
 Location : District : Kannur/State - : Kerala

Sl. No	Factors to be evaluated	Lighthouse specific Lat: 11°51.5'N Long: 75°21.4'E
1	Size of the Lighthouse (Area)	0.833468 Hectors
2	Status of the land , Freehold/lease etc	Freehold
3	Ownership of the lad	DGLL
4	Climatic condition – Temperature& Rainfall	22.00 to 32.90 C. 329mm
5	Tidal range	0.60m
6	History of natural disaster	NIL
7	Distance from nearest Port/Harbour (If located on an island)	NA
8	Distance from nearest Air port/rail head	Manglore Air port -110Km Kannur Rly stn.2.5Km
9	Distance from main cities located nearby	Kannur – 1Km
10	Availability of roads/access to Lighthouse	Motorable road upto LH
11	Availability and facility of Public transport	Bus service up to 1.0 Km of Lighthouse
12	Existences of Natural harbour/berthing facility /landing arrangement(If located in the Island)	NA
13	Telecom coverage and availability of electricity	All networks /KSEB supply available round the clock
14	Availability of potable water	KWA water supply
15	Housing infrastructure	Inspection +5 Staff Qrs, LH Museum
16	Presence of unique Flora and fauna	Coconut trees , Flower plants, shade trees
17	Presence of Natural Features ,waterfalls, streams, mountain etc	NIL.
18	Potential of adventure and water sports	Nil
19	Presence of local/tribal/folk arts	Nil
20	Nearest Tourist destination and distance	Bakel fort 25Km
21	In case, Tourism has to be developed on PPP mode , then statutory permission that would be required and from which agency	Cantonment Cannanore and CRZ from MOEF

SALIENT FEATURES

Name of Lighthouse : ALLEPPEY
 Location : District: Alappuzha/State:- Kerala

Sl. No	Factors to be evaluated	Lighthouse specific Lat:09°29.5'N Long: 76°19.3'E
1	Size of the Lighthouse (Area)	0.3161 Hectors
2	Status of the land , Freehold/lease etc	Freehold
3	Ownership of the land	DGLL
4	Climatic condition – Temperature& Rainfall	22.00 to 32.90 C. 329mm
5	Tidal range	0.60m
6	History of natural disaster	NIL
7	Distance from nearest Port/Harbour (If located on an island)	NA
8	Distance from nearest Air port/rail head	Cochin Air port -95Km AllePPey Rly stn. 2Km
9	Distance from main cities located nearby	AllePPey – 3Km
10	Availability of roads/access to Lighthouse	Motorable road upto LH
11	Availability and facility of Public transport	Bus service up to Lighthouse
12	Existences of Natural harbour/berthing facility /landing arrangement(If located in the Island)	NA
13	Telecom coverage and availability of electricity	All networks /KSEB supply available round the clock
14	Availability of potable water	KWA water supply
15	Housing infrastructure	Inspection +5 Staff Qrs, LH Museum
16	Presence of unique Flora and fauna	Coconut trees , Flower plants, shade trees
17	Presence of Natural Features ,waterfalls, streams, mountain etc	NIL.
18	Potential of adventure and water sports	Nil
19	Presence of local/tribal/folk arts	Nil
20	Nearest Tourist destination and distance	Thangasery/Asram5Km
22	In case, Tourism has to be developed on PPP mode , then statutory permission that would be required and from which agency	Alleppey Municipality and CRZ from MOEF

SALIENT FEATURES

Name of Lighthouse : KADAMATH ISLAND

Location : UT of Lakshadweep

Sl. No	Factors to be evaluated	Lighthouse specific Lat: 11°15.4'N Long: 72°47.4'E
1	Size of the Lighthouse (Area)	0.20 Hectors
2	Status of the land , Freehold/lease etc	Freehold
3	Ownership of the lad	DGLL
4	Climatic condition – Temperature& Rainfall	22.00 to 32.90 C. 329mm
5	Tidal range	0.60m
6	History of natural disaster	NIL
7	Distance from nearest Port/Harbour (If located on an island)	Kadamath jetty 5Km
8	Distance from nearest Air port/rail head	Can reach by ship (Time required 24Hrs)
9	Distance from main cities located nearby	Cochin - 220Nm
10	Availability of roads/access to Lighthouse	Panchayath Road
11	Availability and facility of Public transport	Nil
12	Existences of Natural harbour/berthing facility /landing arrangement(If located in the Island)	NIL
13	Telecom coverage and availability of electricity	BSNL networks /EB supply available round the clock
14	Availability of potable water	Rain water
15	Housing infrastructure	Inspection +1 Staff Qrs
16	Presence of unique Flora and fauna	Coconut trees , Flower plants, shade trees
17	Presence of Natural Features ,waterfalls, streams, mountain etc	NIL.
18	Potential of adventure and water sports	Water sports available with Lakshadweep sports
19	Presence of local/tribal/folk arts	Nil
20	Nearest Tourist destination and distance	Kadamath beach
22	In case, Tourism has to be developed on PPP mode , then statutory permission that would be required and from which agency	Kadamath village Dweep Panchayath and CRZ from MOEF

SALIENT FEATURES

Name of Lighthouse : THINNAKARA ISLAND
 Location : U T OF LAKSHADWEEP

Sl. No	Factors to be evaluated	Lighthouse specific Lat: 10°56.6'N Long: 72°19.0'E
1	Size of the Lighthouse (Area)	0.29 Hectors
2	Status of the land , Freehold/lease etc	Freehold
3	Ownership of the lad	DGLL
4	Climatic condition – Temperature& Rainfall	22.00 to 32.90 C. 329mm
5	Tidal range	0.60m
6	History of natural disaster	NIL
7	Distance from nearest Port/Harbour (If located on an island)	Nil
8	Distance from nearest Air port/rail head	Up to Agathi by air then 10Nm by boat
9	Distance from main cities located nearby	Cochin - 248Nm
10	Availability of roads/access to Lighthouse	By boat
11	Availability and facility of Public transport	Nil
12	Existences of Natural harbour/berthing facility /landing arrangement(If located in the Island)	NIL
13	Telecom coverage and availability of electricity	No electricity
14	Availability of potable water	Rain water
15	Housing infrastructure	Inspection Qrs under construction
16	Presence of unique Flora and fauna	Coconut trees , Flower plants, shade trees
17	Presence of Natural Features ,waterfalls, streams, mountain etc	NIL.
18	Potential of adventure and water sports	Water sports available with Lakshadweep sports in Bangaram Island about 10Nm
19	Presence of local/tribal/folk arts	Nil
20	Nearest Tourist destination and distance	Agathi beach
22	In case, Tourism has to be developed on PPP mode , then statutory permission that would be required and from which agency	Agathi village Dweep Panchayath and CRZ from MOEF

SALIENT FEATURES

Name of Lighthouse : AGATHI ISLAND
 Location : U T OF LAKSHADWEEP

Sl. No	Factors to be evaluated	Lighthouse specific Lat:10°52.5'N Long:72°12.3'E
1	Size of the Lighthouse (Area)	0.232 Hectors
2	Status of the land , Freehold/lease etc	Freehold
3	Ownership of the lad	DGLL
4	Climatic condition – Temperature& Rainfall	22.00 to 32.90 C. 329mm
5	Tidal range	0.60m
6	History of natural disaster	NIL
7	Distance from nearest Port/Harbour (If located on an island)	Agathi jetty 5Km
8	Distance from nearest Air port/rail head	Agathi Airport 6Km
9	Distance from main cities located nearby	Cochin - 248Nm
10	Availability of roads/access to Lighthouse	Panchayath Road
11	Availability and facility of Public transport	Nil
12	Existences of Natural harbour/berthing facility /landing arrangement(If located in the Island)	NIL
13	Telecom coverage and availability of electricity	BSNL networks /EB supply available round the clock
14	Availability of potable water	Rain water
15	Housing infrastructure	Inspection +1 Staff Qrs
16	Presence of unique Flora and fauna	Coconut trees , Flower plants, shade trees
17	Presence of Natural Features ,waterfalls, streams, mountain etc	NIL.
18	Potential of adventure and water sports	Water sports available with Lakshadweep sports in Bangaram Island about 10Nm
19	Presence of local/tribal/folk arts	Nil
20	Nearest Tourist destination and distance	Agathi beach
22	In case, Tourism has to be developed on PPP mode , then statutory permission that would be required and from which agency	Agathi village Dweep Panchayath and CRZ from MOEF

SALIENT FEATURES

Name of Lighthouse : ANDROTH ISLAND

Location : UT of Lakshadweep

Sl. No	Factors to be evaluated	Lighthouse specific Lat: 10°48.8'N Long: 73°39.7'E
1	Size of the Lighthouse (Area)	0.3027 Hectors
2	Status of the land , Freehold/lease etc	Freehold
3	Ownership of the land	DGLL
4	Climatic condition – Temperature& Rainfall	22.00 to 32.90 C. 329mm
5	Tidal range	0.60m
6	History of natural disaster	NIL
7	Distance from nearest Port/Harbour (If located on an island)	Androth Jetty 6.5Km
8	Distance from nearest Air port/rail head	Can reach by ship (Time required 16Hrs)
9	Distance from main cities located nearby	Cochin – 158 Nm
10	Availability of roads/access to Lighthouse	Panchayath Road
11	Availability and facility of Public transport	Nil
12	Existences of Natural harbour/berthing facility /landing arrangement(If located in the Island)	Androth Harbour
13	Telecom coverage and availability of electricity	BSNL networks /EB supply available round the clock
14	Availability of potable water	Rain water
15	Housing infrastructure	Inspection qrs+5 Staff Qrs
16	Presence of unique Flora and fauna	Coconut trees , Flower plants, shade trees
17	Presence of Natural Features ,waterfalls, streams, mountain etc	NIL.
18	Potential of adventure and water sports	Nil
19	Presence of local/tribal/folk arts	Nil
20	Nearest Tourist destination and distance	Androth break water / beach
22	In case, Tourism has to be developed on PPP mode , then statutory permission that would be required and from which agency	Androth village Dweep Panchayath

SALIENT FEATURES

Name of Lighthouse : KAVARATHI ISLAND

Location : UT of Lakshadweep

Sl. No	Factors to be evaluated	Lighthouse specific Lat: 10°33.7'N Long: 72°38.9'E
1	Size of the Lighthouse (Area)	0.1420 Hectors
2	Status of the land , Freehold/lease etc	Freehold
3	Ownership of the lad	DGLL
4	Climatic condition – Temperature& Rainfall	22.00 to 32.90 C. 329mm
5	Tidal range	0.60m
6	History of natural disaster	NIL
7	Distance from nearest Port/Harbour (If located on an island)	Kavarathi Jetty 4Km
8	Distance from nearest Air port/rail head	Can reach by ship (Time required 24Hrs)
9	Distance from main cities located nearby	Cochin - 218Nm
10	Availability of roads/access to Lighthouse	Panchayath Road
11	Availability and facility of Public transport	Nil
12	Existences of Natural harbour/berthing facility /landing arrangement(If located in the Island)	Kavarathi Harbour
13	Telecom coverage and availability of electricity	BSNL networks /EB supply available round the clock
14	Availability of potable water	Rain water
15	Housing infrastructure	4 Staff Qrs
16	Presence of unique Flora and fauna	Coconut trees , Flower plants, shade trees
17	Presence of Natural Features ,waterfalls, streams, mountain etc	NIL.
18	Potential of adventure and water sports	Nil
19	Presence of local/tribal/folk arts	Nil
20	Nearest Tourist destination and distance	Kavarathi beach
22	In case, Tourism has to be developed on PPP mode , then statutory permission that would be required and from which agency	Kavarathi village Dweep Panchayath and CRZ from MOEF

SALIENT FEATURES

Name of Lighthouse : SUHELIPAR ISLAND

Location : UT Of Lakshadweep

Sl. No	Factors to be evaluated	Lighthouse specific Lat: 10° 02.0'N Long: 72°17.0' E
1	Size of the Lighthouse (Area)	0.090 Hectors
2	Status of the land , Freehold/lease etc	Freehold
3	Ownership of the lad	DGLL
4	Climatic condition – Temperature& Rainfall	22.00 to 32.90 C. 329mm
5	Tidal range	0.60m
6	History of natural disaster	NIL
7	Distance from nearest Port/Harbour (If located on an island)	nil
8	Distance from nearest Air port/rail head	Can reach by ship (Time required 24Hrs)
9	Distance from main cities located nearby	Cochin - 241Nm
10	Availability of roads/access to Lighthouse	Nil
11	Availability and facility of Public transport	Nil
12	Existences of Natural harbour/berthing facility /landing arrangement(If located in the Island)	Nil
13	Telecom coverage and availability of electricity	Nil
14	Availability of potable water	Rain water
15	Housing infrastructure	Inspection qrs + Staff Qrs
16	Presence of unique Flora and fauna	Coconut trees , Flower plants, shade trees
17	Presence of Natural Features ,waterfalls, streams, mountain etc	NIL.
18	Potential of adventure and water sports	Nil
19	Presence of local/tribal/folk arts	Nil
20	Nearest Tourist destination and distance	Suhalipar beach
21	In case, Tourism has to be developed on PPP mode , then statutory permission that would be required and from which agency	Kavarathi village Dweep Panchayath and CRZ from MOEF

SALIENT FEATURES

Name of Lighthouse : CHETLATH ISLAND
 Location : U T OF LAKSHADWEEP

Sl. No	Factors to be evaluated	Lighthouse specific Lat: 11°41.8'N Long: 72°43.1'E
1	Size of the Lighthouse (Area)	0.202 Hectors
2	Status of the land , Freehold/lease etc	Freehold
3	Ownership of the lad	Acquisition on payment basis
4	Climatic condition – Temperature& Rainfall	22.00 to 32.90 C. 329mm
5	Tidal range	0.60m
6	History of natural disaster	NIL
7	Distance from nearest Port/Harbour(if located on island)	Nil
8	Distance from nearest Air port/rail head	Can reach by ship (Time required 24Hrs)
9	Distance from main cities located nearby	Cochin - 233Nm
10	Availability of roads/access to Lighthouse	Panchayath road
11	Availability and facility of Public transport	Nil
12	Existences of Natural harbour/berthing facility /landing arrangement(If located in the Island)	Nil
13	Telecom coverage and availability of electricity	BSNL/ EB supply
14	Availability of potable water	Rain water
15	Housing infrastructure	Inspection qrs ,Staff Qrs- 04 units
16	Presence of unique Flora and fauna	Coconut trees , Flower plants, shade trees
17	Presence of Natural Features ,waterfalls, streams, mountain etc	NIL.
18	Potential of adventure and water sports	Nil
19	Presence of local/tribal/folk arts	Nil
20	Nearest Tourist destination and distance	Chetlath beach
21	In case, Tourism has to be developed on PPP mode , then statutory permission that would be required and from which agency	Chetlath village Dweep Panchayath and CRZ from MOEF

SALIENT FEATURES

Name of Lighthouse : KALPENI ISLAND
 Location : U T OF LAKSHADWEEP

Sl. No	Factors to be evaluated	Lighthouse specific Lat: 10°04.9'N Long:73°38.9'E
1	Size of the Lighthouse (Area)	0.253 Hectors
2	Status of the land , Freehold/lease etc	Freehold
3	Ownership of the lad	Acquisition on payment basis
4	Climatic condition – Temperature& Rainfall	22.00 to 32.90 C. 329mm
5	Tidal range	0.60m
6	History of natural disaster	NIL
7	Distance from nearest Port/Harbour(if located on island)	Kalpeni Jetty 4Km
8	Distance from nearest Air port/rail head	Can reach by ship (Time required 16Hrs)
9	Distance from main cities located nearby	Cochin – 155 Nm
10	Availability of roads/access to Lighthouse	Panchayath Road
11	Availability and facility of Public transport	Nil
12	Existences of Natural harbour/berthing facility /landing arrangement(If located in the Island)	Kalpeni Harbour
13	Telecom coverage and availability of electricity	BSNL networks /EB supply available round the clock
14	Availability of potable water	Rain water
15	Housing infrastructure	Inspection qtrs, Staff Qtrs- 05 units
16	Presence of unique Flora and fauna	Coconut trees , Flower plants, shade trees
17	Presence of Natural Features ,waterfalls, streams, mountain etc	NIL.
18	Potential of adventure and water sports	Nil
19	Presence of local/tribal/folk arts	Nil
20	Nearest Tourist destination and distance	Kalpeni beach
22	In case, Tourism has to be developed on PPP mode , then statutory permission that would be required and from which agency	Kalpeni village Dweep Panchayath and CRZ from MOEF

SALIENT FEATURES

Name of Lighthouse : KILTAN ISLAND
 Location : U T OF LAKSHADWEEP

Sl. No	Factors to be evaluated	Lighthouse specific Lat: 11°29.8'N/11°28.2'N Long: 73°0.00'E/73°00.5'E
1	Size of the Lighthouse (Area)	0.328 Hectors
2	Status of the land , Freehold/lease etc	Freehold
3	Ownership of the lad	Acquisition on payment basis
4	Climatic condition – Temperature& Rainfall	22.00 to 32.90 C. 329mm
5	Tidal range	0.60m
6	History of natural disaster	NIL
7	Distance from nearest Port/Harbour(if located on island)	Kiltan Jetty 5Km
8	Distance from nearest Air port/rail head	Can reach by ship (Time required 20Hrs)
9	Distance from main cities located nearby	Cochin – 213 Nm
10	Availability of roads/access to Lighthouse	Panchayath Road
11	Availability and facility of Public transport	Nil
12	Existences of Natural harbour/berthing facility /landing arrangement(If located in the Island)	Kiltan Harbour
13	Telecom coverage and availability of electricity	BSNL networks /EB supply available round the clock
14	Availability of potable water	Rain water
15	Housing infrastructure	Inspection qrs . Staff Qrs- 05 units
16	Presence of unique Flora and fauna	Coconut trees , Flower plants, shade trees
17	Presence of Natural Features ,waterfalls, streams, mountain etc	NIL.
18	Potential of adventure and water sports	Nil
19	Presence of local/tribal/folk arts	Nil
20	Nearest Tourist destination and distance	Kiltan beach
22	In case, Tourism has to be developed on PPP mode , then statutory permission that would be required and from which agency	Kiltan village Dweep Panchayath and CRZ from MOEF

SALIENT FEATURES

Name of Lighthouse : MANAPPAD

Location : Distt.- Tuticorin /State:- Tamilnadu

S.No	Factor to be evaluated	Lighthouse Specific Lat : 08°22.3'N Long: 78°03.9'E
1.	Size of the Lighthouse (area)	37030 Sq.M
2.	Status of land freehold/lease etc.	Freehold
3.	Ownership of land	DGLL
4.	Climatic condition- Temp. & rainfall	During Summer:26°C to 36°C Winder: 17°C to 30°C Rainfall: Oct to Dec
5.	Tidal range	0.50 to 1 m
6.	History of Natural Disasters	Nil
7.	Distance from nearest port/harbour (if located on an island)	NA
8.	Distance from nearest airport/railhead	Tiruchendur Railway Station - 18 Km. Tuticorin Airport-58 Km.
9.	Distance from main city located nearby	Tiruchendur -18Km.
10.	Availability of roads /access to Lighthouse	Motorable road upto lighthouse.
11.	Availability and facility of public transport	2 Km from Lighthouse to Bus stand
12.	Existence of natural harbours/berthing facility / landing arrangement (if located on islands)	Not aPPplicable
13.	Telecom coverage and availability of electricity	Telecom coverage available, Electricity TNEB
14.	Availability of potable water	Municipal water Connection
15.	Housing infrastructure	Inspection Quarters, Power house, Staff Qtrs.-3 Units, CC
16.	Presence of unique flora and fauna	Nil
17.	Presence of natural features- waterfalls, streams, mountains, etc.	Nil
18.	Potential for adventure and water sports	Water surfing already available nearby.
19.	Presence of local/tribal/folk art	Nil
20.	Nearest tourist destination and distance	Tiruchendur -18 Km, Tirunelveli- 68Km., Uvari-28Km
21.	In case, tourism has to be developed on PPP mode , then the statutory permissions that would be required and from which agencies	CRS Clearance, Tamilnadu Government and Tamilnadu Tourism Development Corporation

SALIENT FEATURES

Name of Lighthouse : KILAKKARAI

Location : Distt.- Ramanathapuram /State:- Tamilnadu

S.No	Factor to be evaluated	Lighthouse Specific Lat : 09°13.5'N Long: 78°47.0'E
1.	Size of the Lighthouse (area)	1.27 Hec
2.	Status of land freehold/lease etc.	Freehold
3.	Ownership of land	DGLL
4.	Climatic condition- Temp. & rainfall	During Summer:26°C to 36°C Winder: 17°C to 30°C Rainfall: Oct to Dec
5.	Tidal range	0.20 to 0.70 m
6.	History of Natural Disasters	Nil
7.	Distance from nearest port/harbour (if located on an island)	NA
8.	Distance from nearest airport/railhead	Ramanathapuram Railway Station-17 Km.
9.	Distance from main city located nearby	Within city limit
10.	Availability of roads /access to Lighthouse	Motorable road upto lighthouse.
11.	Availability and facility of public transport	0.5 Km from Lighthouse to Bus stand.
12.	Existence of natural harbours/berthing facility / landing arrangement (if located on islands)	NA
13.	Telecom coverage and availability of electricity	Telecom coverage available, Electricity TNEB
14.	Availability of potable water	Municipal water Connection
15.	Housing infrastructure	Inspection Quarters, Power house, Staff Qtrs.-5 Nos.
16.	Presence of unique flora and fauna	Nil
17.	Presence of natural features- waterfalls, streams, mountains, etc.	Nil
18.	Potential for adventure and water sports	Nil
19.	Presence of local/tribal/folk art	Nil
20.	Nearest tourist destination and distance	Pamban Bridge -57 Km,
21.	In case, tourism has to be developed on PPP mode , then the statutory permissions that would be required and from which agencies	CRS Clearance, Tamilnadu Government and Tamilnadu Tourism Development Corporation

SALIENT FEATURES

Name of Lighthouse : KODIAKKARAI

Location : Distt.- /State:- Tamilnadu

S.No.	Factor to be evaluated	Lighthouse Specific Lat : 10°16.7'N Long: 79°49.6'E
1.	Size of the Lighthouse (area)	1.02Hec
2.	Status of land freehold/lease etc.	Freehold.
3.	Ownership of land	DGLL
4.	Climatic condition- Temp. & rainfall	During Summer: 28°C to 36°C Winder: 21°C to 29°C Rainfall:1100-1500mm(per year)
5.	Tidal range	0.15 to 0.3m
6.	History of Natural Disasters	Tsunami –Dec.2004,
7.	Distance from nearest port/harbour (if located on an island)	NA
8.	Distance from nearest airport/railhead	Tiruchirapalli Airport-170Km., Nagapattinam Railway Stn.-60 Km
9.	Distance from main city located nearby	Vedaranyam-12Km, Nagapattinam-60Km
10.	Availability of roads /access to Lighthouse	Motorable road upto lighthouse.
11.	Availability and facility of public transport	Bus Service up to 0.5 Km away from lighthouse.
12.	Existence of natural harbours/berthing facility / landing arrangement (if located on islands)	NA
13.	Telecom coverage and availability of electricity	Telecom coverage and TNEB Electricity available.
14.	Availability of potable water	Panchayat Water supply and Rain Water Sump
15.	Housing infrastructure	Powerhouse, Inspection Quarters, Staff Qtrs.-6 Nos., Pump house
16.	Presence of unique flora and fauna	Manikara Hexandra/ Black Buck
17.	Presence of natural features- waterfalls, streams, mountains, etc.	1. Nearby natural forest (2Kms away) Pointe calimere, having wildlife sanctuary and birds sanctuary. 2. Nearby Mangrove forest-Avicenia marina at Muthhupettai-(53Km away)
18.	Potential for adventure and water sports	If feasible, connecting and operating a rope car through our department by linking kodikkarai and point calimere Lighthouse (5Km dist.) for viewing wild life and sea
19.	Presence of local/tribal/folk art	Nil
20.	Nearest tourist destination and distance	Point Calimere
21.	In case, tourism has to be developed on PPP mode , then the statutory permissions that would be required and from which agencies	CRZ Clearance, Tamilnadu Government and Tamilnadu Tourism Development Corporation, Environment and Forest department

SALIENT FEATURES

Name of Lighthouse : PORTONOVO

Location : Distt.- Cuddalore / State:- Tamilnadu

S.No.	Factor to be evaluated	Lighthouse Specific Lat : 11°30.2'N Long: 79°46.2'E
1.	Size of the Lighthouse (area)	3.714 Hec
2.	Status of land freehold/lease etc.	Freehold
3.	Ownership of land	DGLL
4.	Climatic condition- Temp. & rainfall	During Summer: 20°C to 40°C Winder: 20°C to 30°C Rainfall: 1249mm
5.	Tidal range	0.5 to 1.15 m
6.	History of Natural Disasters	Tsunami –Dec.2004, Thane Cyclone- Dec.2011
7.	Distance from nearest port/harbour (if located on an island)	NA
8.	Distance from nearest airport/railhead	Puducherry Airport-60Km., Tiruchirapalli Airport- 180Km., Chidambaram Railway Stn.-20 Km
9.	Distance from main city located nearby	Chidambaram-20Km
10.	Availability of roads /access to Lighthouse	Motorable road upto lighthouse.
11.	Availability and facility of public transport	Bus Service up to 3.5 Km away from lighthouse.
12.	Existence of natural harbours/berthing facility / landing arrangement (if located on islands)	NA
13.	Telecom coverage and availability of electricity	Telecom coverage and Electricity available.
14.	Availability of potable water	Panchayat Water supply
15.	Housing infrastructure	Powerhouse, Inspection Quarters, Staff Qtrs.-06units, Pump house
16.	Presence of unique flora and fauna	Nil
17.	Presence of natural features- waterfalls, streams, mountains, etc.	Nil
18.	Potential for adventure and water sports	At Pichavaram Mangrove forest, second biggest in India water sports is already available.
19.	Presence of local/tribal/folk art	Nil
20.	Nearest tourist destination and distance	1.Pichavaram Mangrove forest -10Km, 2. Chidambaram Temple-20Km, 3.Silver beach, Cuddalore-38Km, 4.Puducherry - 54Km
21.	In case, tourism has to be developed on PPP mode , then the statutory permissions that would be required and from which agencies	CRZ Clearance, Tamilnadu Government and Tamilnadu Tourism Development Corporation

SALIENT FEATURES

Name of Lighthouse : PULICAT
 Location : Distt.- Tiruvallur /State – Tamilnadu

S.No	Factor to be evaluated	Lighthouse Specific Lat : 13°25.2'N Long: 80°19.7'E
1.	Size of the Lighthouse (area)	5 Acre
2.	Status of land freehold/lease etc.	Freehold
3.	Ownership of land	DGLL
4.	Climatic condition- Temp. & rainfall	During Summer:28°C to 40°C Winder: 17°C to 30°C Rainfall: Oct to Dec
5.	Tidal range	0.20 to 0.70 m
6.	History of Natural Disasters	Nil
7.	Distance from nearest port/harbour (if located on an island)	Kattupalli Port-17 KM, Chennai Port-57 KM
8.	Distance from nearest airport/railhead	Ponneri Railway Station-20KM Chennai Airport-74 KM
9.	Distance from main city located nearby	Chennai – 57 KM
10.	Availability of roads /access to Lighthouse	Road aPPProach 5 min walk
11.	Availability and facility of public transport	Bus Service available upto Pazhaverkadu (0.5 Km from Lighthouse)
12.	Existence of natural harbours/berthing facility / landing arrangement (if located on islands)	Chennai Harbour
13.	Telecom coverage and availability of electricity	Telecom coverage available and Electricity board TNEB
14.	Availability of potable water	Local Open Well at Inside of compound
15.	Housing infrastructure	Powerhouse Inspection Quarters, Staff Qtrs. – 05 Nos. Pump house,
16.	Presence of unique flora and fauna	Local fisherman making special type of prawn culture and lake fish culture.
17.	Presence of natural features- waterfalls, streams, mountains, etc.	Bird sanctuary, Pulicat Lake
18.	Potential for adventure and water sports	Boating
19.	Presence of local/tribal/folk art	Nil
20.	Nearest tourist destination and distance	Dutch cemetery-1.5 Km
21.	In case, tourism has to be developed on PPP mode , then the statutory permissions that would be required and from which agencies	CRZ Clearance, Tamilnadu Government and Tamilnadu Tourism Development Corporation

SALIENT FEATURES

Name of Lighthouse : PONDICHERRY
 Location : Distt.- Puduchery/State – Puducherry Union
 Territory

S.No.	Factor to be evaluated	Lighthouse Specific Lat : 11°54.9'N Long: 79°49.9'E
1.	Size of the Lighthouse (area)	0.755Hec
2.	Status of land freehold/lease etc.	Freehold
3.	Ownership of land	DGLL
4.	Climatic condition- Temp. & rainfall	During Summer: 27°C to 40°C Winder: 17°C to 30°C Rainfall: Oct to Dec
5.	Tidal range	0.5 to 1 m
6.	History of Natural Disasters	Tsunami –Dec.2004, Thane Cyclone- Dec.2011
7.	Distance from nearest port/harbour (if located on an island)	NA
8.	Distance from nearest airport/railhead	Pondicherry Airport- 8Km., Pondicherry Railway Stn.-1.5 Km
9.	Distance from main city located nearby	2Km from Lighthouse
10.	Availability of roads /access to Lighthouse	Motorable road upto lighthouse.
11.	Availability and facility of public transport	Bus Service up to 1.5 Km away from lighthouse.
12.	Existence of natural harbours/berthing facility / landing arrangement (if located on islands)	NA
13.	Telecom coverage and availability of electricity	Telecom coverage and Electricity available.
14.	Availability of potable water	Bore well
15.	Housing infrastructure	Lighthouse tower, Powerhouse, Inspection Quarters, Staff Qtrs.-6 Nos., Pump house
16.	Presence of unique flora and fauna	Nil
17.	Presence of natural features- waterfalls, streams, mountains, etc.	Nil
18.	Potential for adventure and water sports	Nil
19.	Presence of local/tribal/folk art	Nil
20.	Nearest tourist destination and distance	1. Puducherry Beach-1Km, 2.Aravind Ashram-5Km, 3.Aurovil-12Km, 4.Chunnambar Boat House - 7Km 5. Mahabalipuram-97Km,
21.	In case, tourism has to be developed on PPP mode , then the statutory permissions that would be required and from which agencies	CRZ Clearance, Tamilnadu Government and Tamilnadu Tourism Development Corporation

SALIENT FEATURES

Name of Lighthouse : ANTERVEDI

Location : Distt- East Godavari, State – Andhra Pradesh

S.N o.	Factor to be evaluated	Lighthouse specific
1.	Size of the Lighthouse (area)	5.42 acres
2.	Status of land freehold/lease etc.	Freehold
3.	Ownership of land	DGLL
4.	Climatic condition- Temp. & rainfall	Temp-30°C to 43°C, Normal rainfall
5.	Tidal range	Not available
6.	History of Natural Disasters	Hud-Hud, cyclone
7.	Distance from nearest port/harbour (if located on an island)	Located on main land
8.	Distance from nearest airport/railhead	90kms from Rajahmundry Airport 90kms from Rajahmundry railway station
9.	Distance from main city located nearby	90kms from Rajahmundry
10.	Availability of roads /access to Lighthouse	Available
11.	Availability and facility of public transport	Bus service upto 3km away from LH
12.	Existence of natural harbours/berthing facility / landing arrangement (if located on islands)	NA
13.	Telecom coverage and availability of electricity	Yes
14.	Availability of potable water	Not available
15.	Housing infrastructure	IQ, PH, staff qtr – 06 units
16.	Presence of unique flora and fauna	Nil
17.	Presence of natural features- waterfalls, streams, mountains, etc.	Nil
18.	Potential for adventure and water sports	Nil
19.	Presence of local/tribal/folk art	Nil
20.	Nearest tourist destination and distance	Lord Visnu Temple, Antervedi
21.	In case, tourism has to be developed on PPP mode , then the statutory permissions that would be required and from which agencies	CRZ clearance and state port department and local panchayat

SALIENT FEATURES

Name of Lighthouse : SACRAMENTO LIGHTHOUSE
 Location : Distt- East Godavari, State – Andhra Pradesh

S.N o.	Factor to be evaluated	Lighthouse specific
1.	Size of the Lighthouse (area)	27.1 hectors
2.	Status of land freehold/lease etc.	Free hold
3.	Ownership of land	DGLL
4.	Climatic condition- Temp. & rainfall	Temp-23°C to 46°C
5.	Tidal range	Not available
6.	History of Natural Disasters	Cyclonic
7.	Distance from nearest port/harbour (if located on an island)	NA
8.	Distance from nearest airport/railhead	Rajahmundry-70kms
9.	Distance from main city located nearby	Kakinada-70kms
10.	Availability of roads /access to Lighthouse	Motorable upto 3 km away from LH
11.	Availability and facility of public transport	Nil
12.	Existence of natural harbours/berthing facility / landing arrangement (if located on islands)	NA
13.	Telecom coverage and availability of electricity	Yes
14.	Availability of potable water	Not available
15.	Housing infrastructure	IQ, staff qtr- 05 units
16.	Presence of unique flora and fauna	Nil
17.	Presence of natural features- waterfalls, streams, mountains, etc.	Nil
18.	Potential for adventure and water sports	Nil
19.	Presence of local/tribal/folk art	Nil
20.	Nearest tourist destination and distance	Nil
21.	In case, tourism has to be developed on PPP mode , then the statutory permissions that would be required and from which agencies	CRZ clearances from MOEF and forest department

SALIENT FEATURES

Name of Lighthouse : VAKALPUDI LIGHTHOUSE

Location : Distt- East Godavari, State – Andhra Pradesh

S.No.	Factor to be evaluated	Lighthouse specific
1.	Size of the Lighthouse (area)	6 acres
2.	Status of land freehold/lease etc.	Freehold
3.	Ownership of land	DGLL
4.	Climatic condition- Temp. & rainfall	Temp-32°C to 48°C
5.	Tidal range	Not available
6.	History of Natural Disasters	Nil
7.	Distance from nearest port/harbour (if located on an island)	Kakinada port - 10kms
8.	Distance from nearest airport/railhead	Rajahmundry Airport-100kms Samalkota – 20 kms
9.	Distance from main city located nearby	Kakinada-15kms
10.	Availability of roads /access to Lighthouse	By Auto-15kms to Lighthouse
11.	Availability and facility of public transport	Auto
12.	Existence of natural harbours/berthing facility / landing arrangement (if located on islands)	NA
13.	Telecom coverage and availability of electricity	Yes
14.	Availability of potable water	No
15.	Housing infrastructure	Power house, office, store, record room, staff qtr- 03 units
16.	Presence of unique flora and fauna	Nil
17.	Presence of natural features- waterfalls, streams, mountains, etc.	Nil
18.	Potential for adventure and water sports	Nil
19.	Presence of local/tribal/folk art	Nil
20.	Nearest tourist destination and distance	Samalkot -15 Km Annaram -40 Km
21.	In case, tourism has to be developed on PPP mode , then the statutory permissions that would be required and from which agencies	CRZ clearance from MOEF and Port Dept.

SALIENT FEATURES

Name of Lighthouse : SANTAPALLI LIGHTHOUSE
 Location : Distt- Vizianagaram, State – Andhra Pradesh

S.No	Factor to be evaluated	Lighthouse specific
1.	Size of the Lighthouse (area)	11.56 acres
2.	Status of land freehold/lease etc.	Free hold
3.	Ownership of land	DGLL
4.	Climatic condition- Temp. & rainfall	Temp-23°C to 45°C
5.	Tidal range	Not available
6.	History of Natural Disasters	cyclonic
7.	Distance from nearest port/harbour (if located on an island)	NA
8.	Distance from nearest airport/railhead	Visakhapatnam Airport-80kms
9.	Distance from main city located nearby	Vizianagaram - 40kms
10.	Availability of roads /access to Lighthouse	Motorable road upto LH
11.	Availability and facility of public transport	Upto 1.5 km from LH
12.	Existence of natural harbours/berthing facility / landing arrangement (if located on islands)	NA
13.	Telecom coverage and availability of electricity	Yes
14.	Availability of potable water	Borewell
15.	Housing infrastructure	Inspection Quarters, staff qtr-05 units
16.	Presence of unique flora and fauna	Nil
17.	Presence of natural features- waterfalls, streams, mountains, etc.	Nil
18.	Potential for adventure and water sports	Nil
19.	Presence of local/tribal/folk art	Nil
20.	Nearest tourist destination and distance	Geeta Mandir-10 kms from LH
21.	In case, tourism has to be developed on PPP mode , then the statutory permissions that would be required and from which agencies	CRZ and state port department

SALIENT FEATURES

Name of Lighthouse : KALINGAPATNAM LIGHTHOUSE
 Location : Dist- Srikakulam, State - Andhra Pradesh

S.No.	Factor to be evaluated	Lighthouse specific Lat : 18°20.4'N Long: 84°07.6'E
1	Size of the Lighthouse (Area)	1.0 Hectares
2	Status of land freehold / lease etc	Free hold
3	Ownership of Land	DGLL
4	Climatic condition – Temp. & rainfall	Annual Average 15° to 40°C Annual average 974 mm. Average annual : 72% to 76%
5	Tidal Range	Upto 2.17 mtrs
6	History of Natural Disasters	Nil
7	Distance from nearest Port/ Harbour (if located on island)	NA
8	Distance from Nearest Airport / railhead	Visakhapatnam Airport - 145 Kms. Srikakulam Railway station 60 kms.
9	Distance from Main cities located nearby	Srikakulam 60 kms.
10	Availability of roads / access to Lighthouse	Motorable Road upto Lighthouse.
11	Availability and facility of public transport	Bus service upto 01 km. from Lighthouse
12	Existence of natural harbors / Berthing facility/ landing arrangement (if located on islands)	NA
13	Telecom coverage	Mobile Network coverage
14	Availability of potable water	Bore well
15	Housing infrastructure	IQ , Staff Quarters- 05 units
16	Presence of unique flora and fauna	Nil
17	Presence of natural features waterfalls, streams, mountains etc.	Nil
18	Potential for adventure and water sports	Nil
19	Presence of local / tribal/ folk art	Nil
20	Nearest tourist destination and distance	Nil
21	In case tourism has to be developed on PPP mode, then the statutory permission that would be required and from which agency	CRZ clearance from MOEF and local bodies.

SALIENT FEATURES

Name of Lighthouse : NAGAYALANKA LIGHTHOUSE (ISLAND)
 Location : Nagayalanka Village, Nagayalanka Mandal, Distt –
 KRISHNA State – Andhra Pradesh

S.No.	Factor to be evaluated	Lighthouse specific
1.	Size of the Lighthouse (area)	Ac.2.5 Cts. (approx.)
2.	Status of land freehold / lease etc.	Freehold
3.	Ownership of land	DGLL
4.	Climatic condition – Temp. & rainfall	Avg. temp – 25 ⁰ C to 45 ⁰ C Avg. Rainfall – 500 mm to 900 mm
5.	Tidal range	Approx. 2 m
6.	History of Natural Disasters	Severe Cyclone Zone - Leher in 2013 & 1977 Diviseema Cyclone
7.	Distance from nearest port/harbour (if located on an island)	Machilipatnam Port about 80 kms.
8.	Distance from nearest airport/railhead	Gannavaram AirPort (Vijayawada) about 100 kms. Machilipatnam Rly about 80 kms.
9.	Distance from main city located nearby	Machilipatnam about 72 kms.
10.	Availability of roads/access to Lighthouse	Road is available upto Nagayalanka village, thereafter by launch only
11.	Availability and facility of public transport	Public transport available up to Nagayalanka Village Jetty
12.	Existence of natural harbours/berthing facility/landing arrangement (if located on islands)	From Nagayalanka village, 30kms by hiring mechanised boat up to Lighthouse in Krishna river mouth.
13.	Telecom coverage and availability of electricity	Mobile coverage only, No electricity and solar based
14.	Availability of potable water	Not Available, rain water collection.
15.	Housing infrastructure	Staff qtr – 06 units , Inspection Qtr
16.	Presence of unique flora and fauna	Nil
17.	Presence of natural features - waterfalls, streams, mountains, etc.	Nil
18.	Potential for adventure and water sports	Nil
19.	Presence of local/tribal/folk art	Nil
20.	Nearest tourist destination and distance	Vijayawada 95kms
21.	In case, tourism has to be developed on PP mode, then the statutory permissions that would be required and from which agencies	Local panchayat, District Collector, Krishna.

SALIENT FEATURES

Name of Lighthouse : GOPALPUR LIGHTHOUSE
 Location : Distt- Ganjam /State- Odisha

S. No.	Factor to be evaluated	Lighthouse specific Lat- 19°15.3'N Long- 84°54.5'E
1.	Size of the Lighthouse (area)	11300 sqm
2.	Status of land freehold/lease etc.	Freehold
3.	Ownership of land	DGLL
4.	Climatic condition- Temp. & rainfall	Temp- 27°C (Av) Rainfall- 1489mm (av annual)
5.	Tidal range	Not available
6.	History of Natural Disasters	Super Cyclone in 1999 Phalin in 2013
7.	Distance from nearest port/harbour (if located on an island)	NA
8.	Distance from nearest airport/railhead	Railhead- Berhampur-16 kms Airport- Bhubaneswar- 170 kms
9.	Distance from main city located nearby	Berhampur- 16 kms
10.	Availability of roads /access to Lighthouse	Motorable road upto LH
11.	Availability and facility of public transport	Public transport available
12.	Existence of natural harbours/berthing facility / landing arrangement (if located on islands)	NA
13.	Telecom coverage and availability of electricity	Yes
14.	Availability of potable water	yes
15.	Housing infrastructure	IQ, PH staff qtr – 03 units
16.	Presence of unique flora and fauna	Nil
17.	Presence of natural features- waterfalls, streams, mountains, etc.	Hot water spring at taptapani- 70 kms
18.	Potential for adventure and water sports	Nil
19.	Presence of local/tribal/folk art	Sand art
20.	Nearest tourist destination and distance	Gopalpur- famous sea beach Taptapani- 70 km
21.	In case, tourism has to be developed on PPP mode , then the statutory permissions that would be required and from which agencies	CRZ from MOEF

SALIENT FEATURES

Name of Lighthouse : PURI LIGHTHOUSE
 Location : Dist- Puri , State - Odisha

S.No.	Factor to be evaluated	Lighthouse specific Lat : 19°47.4'N Long: 85°48.4'E
1	Size of the Lighthouse (Area)	0.60 Acre
2	Status of Land Freehold/ lease etc.	Freehold
3	Ownership of Land	DGLL
4	Climate Condition-Temp.& reinfall	Average annual 24° to 30°C Average annual 1439 mm Annual Average 80%
5	Tidal Range	Upto 2.25m
6	History of Natural Disasters	Hudhud – Oct.,2014 (Cyclonic Storm with Sea-surge prone zone)
7	Distance from nearest Port/ Harbors (if located on an Island)	NA
8	Distance from Nearest Airport/ Railhead	Airport Bhubneswar 65 Kms Puri Railway station 08 Kms.
9	Distance from Main cities	Puri is a town. Main city is Bhubaneswar at a distance of 65 Kms
10	Availability of roads / access to Lighthouse	Motorable road upto LH
11	Availability and facility of public transport	Bus services from Puri / Bhubneswar
12	Existence of natural harbours/ berthing facility / landing arrangement (if located on islands)	NA
13	Telecom coverage	Land line/Mobile network coverage.
14	Availability of Potable water	Bore well and municipality supply
15	Housing infrastructure	IQ 02 Nos , staff Quarters – 02 units
16	Presence of unique flora and fauna	Nil
17	Presence of natural features waterfalls, streams, mountains etc.	Nil
18	Potential for adventure and water sports	Nil
19	Present of Local/ tribal/ folk art	Nil
20	Nearest tourist destination and distance	Lord Jagannath Temple 04 Kms. From Lighthouse
21	In case tourism has to be developed on PPP mode, then the statutory permission that would be required and from which agency	CRZ clearance from MOEF and local bodies

SALIENT FEATURES

Name of Lighthouse : PARADIP LIGHTHOUSE
 Location : Dist- Jagatsinghpur, State - Odisha

S.No.	Factor to be evaluated	Lighthouse specific Lat : 20°15.3'N Long: 86°39.5'E
1	Size of the Lighthouse (Area)	1.22 Hectares
2	Status of Land freehold / Lease etc.	Lease
3	Ownership of Land	Paradip Port Trust
4	Climate Condition – Temp & Rainfall	Average annual 14°C to 37°C Average annual 1439 mm Annual Average 75% to 80%
5	Tidal Range	Upto 2.67m
6	History of Natural Disasters	Cyclone
7	Distance from nearest Port/ Harbour (if Located on Island)	NA
8	Distance from Nearest Airport /Railhead	Bhubneswar Airport 107 Km. Paradip Railway station 20 Kms.
9	Distance from Main cities	About 95 km by road from Cuttack./ Bhubneswar
10	Availability of roads access to Lighthouse	Motorable road upto Lighthouse
11	Availability and facility of public transport	Train / Buses from Cuttack and Bhubneswar.
12	Existence of natural harbors/ Berthing facility/ landing arrangement (if located on Islands)	NA
13	Telecom coverage	Land line/Mobile network coverage.
14	Availability of Potable water	Supply from Port Trust and Bore wel
15	Housing infrastructure	Staff Quarters- 6 Nos. and IQ.
16	Presence of unique flora and fauna	Nil
17	Presence of natural features waterfalls, streams, mountains etc.	Nil
18	Potential for adventure and water sports	Nil
19	Presence of local / tribal/ folk art	Nil
20	Nearest tourist destination	Nil
21	In case tourism has to be developed on PPP mode, then the statutory permission that would be required and from which agency	CRZ clearance from MOEF, Paradip Port Trust

SALIENT FEATURES

Name of Lighthouse : FALSE POINT LIGHTHOUSE
 Location : Distt- Kendrapara /State- Odisha

S. No.	Factor to be evaluated	Lighthouse specific Lat-20°19.8'N 86°44.5'E
1.	Size of the Lighthouse (area)	104000 sqm
2.	Status of land freehold/lease etc.	Freehold
3.	Ownership of land	DGLL
4.	Climatic condition- Temp. & rainfall	Temp- 27°C (av) Rainfall- 1489mm (av annual)
5.	Tidal range	Not avaiialble
6.	History of Natural Disasters	Super cyclone in 1999 Phalin in 2013
7.	Distance from nearest port/harbour (if located on an island)	Paradip - 16 kms
8.	Distance from nearest airport/railhead	Railhead – Paradip – 16 kms Airport – Bhubaneswar- 115 kms
9.	Distance from main city located nearby	Paradip- 16 kms
10.	Availability of roads /access to Lighthouse	Nil at present (road link is under progress)
11.	Availability and facility of public transport	Nil
12.	Existence of natural harbours/berthing facility / landing arrangement (if located on islands)	Paradip
13.	Telecom coverage and availability of electricity	Yes
14.	Availability of potable water	Yes
15.	Housing infrastructure	Lighthouse tower, staff qtr, power house , Inspection qtr,
16.	Presence of unique flora and fauna	Mangrove forest
17.	Presence of natural features- waterfalls, streams, mountains, etc.	Nil
18.	Potential for adventure and water sports	Nil
19.	Presence of local/tribal/folk art	Odishi dance
20.	Nearest tourist destination and distance	Paradip aquarium – 16 kms Maritime museum- 16 kms
21.	In case, tourism has to be developed on PPP mode , then the statutory permissions that would be required and from which agencies	CRZ clearance from MOEF.

SALIENT FEATURES

Name of Lighthouse : DARIAPUR LIGHTHOUSE
 Location : Dist- East Midnapur, State - West Bemgal

S.No.	Factor to be evaluated	Lighthouse specific Lat : 21°47.4'N Long: 87°51.9'E
1	Size of the Lighthouse (Area)	1.02 Hectares
2	Status of land free hold/lease etc	Free hold
3	Ownership of land	DGLL
4	Climate conditions-temp, rainfall etc	Annual Average 11°C to 36°C. Annual Average 1908 mm Annual Average 75% to 80%
5	Tidal Range	Range : 2.5 Mtrs to 4.5 mtrs
6	History of Natural Disasters	Aila (Cyclonic Storm with Sea-surge) on 25.5.2009 Low intensity earthquake on 25.4.15 & 12.5.15
7	Distance from the nearest port/harbor (if island station)	NA
8	Distance from Nearest Airport/rail head	175 km (Kolkata Air Port), Rail Station-Kanthi 21Kms.
9	Distance from Main cities	Kontai-25 Kms Khargpur- 50 Kms Kolkata , 175 Km.
10	Availability of roads/access to Lighthouse	Rural motorable Road up to lighthouse
11	Availability and facility of public transport	Bus up to Kontai upto 25 Kms before LH.
12	Existence of natural harbor/berthing facility/landing arrangement(if located on island)	NA
13	Telecom coverage	Mobile network coverage
14	Availability of potable water	Bore well
15	Housing infrastructure	IQ and staff qtr- 05 units
16	Presence of unique flora and fauna	Nil
17	Presence of natural features waterfalls, streams, mountains etc.	Nil
18	Potential for adventure and water sports	Nil
19	Presence of local / tribal/ folk art	Nil
20	Nearest tourist destination	Digha distance 50 Kms
21	In case tourism has to be developed on PPP mode, then the statutory permission that would be required and from which agency	Local panchayat

SALIENT FEATURES

Name of Lighthouse : SAUGAR ISLAND
 Location : Sagar Lighthouse. P.O.BEGUAKAHALI,
 Dist- 24 Pargana (South) West Bengal

S.No.	Factor to be evaluated	Lighthouse specific Lat : 21°39.4'N Long: 88°02.9'E
1	Size of the Lighthouse (Area)	6.00 Acres
2	Status of land free hold/lease etc	Free hold
3	Ownership of land	DGLL
4	Climate Condition –temp& rain fall	Annual Average variation, 11°C to 36°C. Annual Average 1908 mm, Annual Average 75% to 80%
5	Tidal Range	Upto 4.5 mtrs
6	History of Natural Disasters	Aila (Cyclonic Storm with Sea-surge) on 25.5.2009 Low intensity earthquake on 25.4.15
7	Distance from the nearest Port/ Harbour (if located on island)	Haldia Port. (30 n.m)
8	Distance from nearest Airport/rail head	150 Kms Air Port, 50 Kms train station Kak Dweep
9	Distance from Main cities located nearby	Kolkata , About 150 Km.
10	Availability of roads/ access to lighthouse	Rural brick Road motorable upto to 03 Kms before Lighthouse
11	Availability of public transport	Bus service upto 08 kms before lighthouse
12	Existence of natural harbours/berthing facility/landing arrangement (if located on island)	Located on island but after crossing by ferry motorable road is upto 03kms before lighthouse
13	Telecom coverage	Mobile coverage
14	Availability of potable water	Borewell
15	Housing infrastructure	Inspection quarters,Staff quarters – 03 units
16	Presence of unique flora and fauna	Nil
17	Presence of natural features waterfalls, streams, mountains etc.	Nil
18	Potential for adventure and water sports	Nil
19	Presence of local / tribal/ folk art	Nil
20	Nearest tourist destination and distance	Ganga Sagar is approximately 25 Kms from lighthouse.
21	In case tourism has to be developed on PPP mode, then the statutory permission that would be required and from which agency	CRZ clearance from MOEF and local bodies.

SALIENT FEATURES

Name of Lighthouse : NORTH POINT

Location : Port Blair, Andaman & Nicobar Islands

S.No.	Factor to be Evaluated	Lighthouse specific Lat:11°42.2'N Long: 92°45.4'E
1.	Size of the Lighthouse (area)	10.52 acre
2.	Status of land freehold/lease, etc	Freehold
3.	Ownership of land	DGLL
4.	Climate condition-Temp. & Rainfall	Avg. Temp- 23° C to 35°C Annual Avg. rainfall – 2600 mm.
5.	Tidal range	Avg. Range-1.5 to 3.0 m.
6.	History of Natural Disasters	Tsunami' 2004
7.	Distance from nearest port/harbour (if located on an Island)	3.0 km from Port Blair Port/Harbour
8.	Distance from nearest airport/railhead	Veer Sarvarkar Airport, Port Blair – 9 km
9.	Distance from main city located nearby	Port Blair – 5 km
10.	Availability of roads/access to the Lighthouse	Kachha approach pathway of 365 m from North Bay Beach and CC pathway up to lighthouse.
11.	Availability and facility of public transport	No Public transport, Private Ferry Facility available.
12.	Existence of natural harbours/berthing facility/landing arrangement (if located on islands)	Nil
13.	Telecom coverage and availability of electricity	Telecom Service - BSNL, Airtel Electricity Supply from State electricity Board and back up with DG sets.
14.	Availability of Potable water	Rain water storage
15.	Housing infrastructure	Lighthouse complex with staff quarter.
16.	Presence of unique flora and fauna	Corals, Deers & Birds
17.	Presence of natural features waterfalls, streams, mountains, etc.	Nil
18.	Potential for adventure and water sports	A small (Not well Established) water sports complex including sea walk features, operated by private tourism. Distance 3Km.
19.	Presence of local/tribal/folk art	Nil
20.	Nearest tourist destination and distance	North Bay Beach, Carbin Cove Beach, Ross Island
21.	In case, tourism has to be developed on PPP mode, then the statutory permissions that would be required and from which agencies	Forest and CRZ clearance from Department of Forest and wildlife , Andaman & Nicobar Administration

SALIENT FEATURES

Name of Lighthouse : NORTH CINQUE

Location : North Cinque, Andaman & Nicobar Islands

S.No.	Factor to be Evaluated	Lighthouse specific Lat: 11°19.6'N Long : 92°43.4'E
1.	Size of the Lighthouse (area)	225 Sqm
2.	Status of land freehold/lease, etc	Freehold
3.	Ownership of land	DGLL
4.	Climate condition-Temp. & Rainfall	Avg. Temp- 23° C to 35°C Annual Avg. rainfall – 2600 mm.
5.	Tidal range	Avg. Range-1.5 to 3.0 m.
6.	History of Natural Disasters	Tsunami' 2004
7.	Distance from nearest port/harbour (if located on an Island)	65Km
8.	Distance from nearest airport/railhead	Veer Sarvarkar Airport - 69Km
9.	Distance from main city located nearby	Port Blair
10.	Availability of roads/access to the Lighthouse	Kachcha aPPProach way about 3.5 Km from shoreline
11.	Availability and facility of public transport	Nil
12.	Existence of natural harbours/berthing facility/landing arrangement (if located on islands)	Nil
13.	Telecom coverage and availability of electricity	Nil
14.	Availability of Potable water	Nil
15.	Housing infrastructure	Lighthouse complex only
16.	Presence of unique flora and fauna	Corals & Birds
17.	Presence of natural features waterfalls, streams, mountains, etc.	Nil
18.	Potential for adventure and water sports	underwater diving
19.	Presence of local/tribal/folk art	Nil
20.	Nearest tourist destination and distance	Jolly Bouy & Red Skin about 30 Km
21.	In case, tourism has to be developed on PPP mode, then the statutory permissions that would be required and from which agencies	CRZ clearance from Department of Forest and wildlife , Andaman & Nicobar Administration

SALIENT FEATURES

Name of Lighthouse : PORT CORNWALLIS

Location : Ross & Smith Island, Diglipur, Andaman & Nicobar Islands

S.No.	Factor to be Evaluated	Lighthouse specific Lat: 13°17.9'N Long: 93°04.6'E
1.	Size of the Lighthouse (area)	377.0 Sq.m
2.	Status of land freehold/lease, etc	Freehold
3.	Ownership of land	DGLL
4.	Climate condition-Temp. & Rainfall	Avg. Temp- 23° C to 35°C Annual Avg. rainfall – 2600 mm.
5.	Tidal range	Avg. Range-1.5 to 3.0 m.
6.	History of Natural Disasters	Tsunami' 2004
7.	Distance from nearest port/harbour (if located on an Island)	8 Km from Diglipur
8.	Distance from nearest airport/railhead	Veer Sarvarkar Airport, Port Blair - 315Km
9.	Distance from main city located nearby	Diglipur – 17Km
10.	Availability of roads/access to the Lighthouse	Kachcha aPPProach Pathway of 600m from Ross Beach
11.	Availability and facility of public transport	No Public transport, Private ferry service.
12.	Existence of natural harbours/berthing facility/landing arrangement (if located on islands)	Smith Island Jetty
13.	Telecom coverage and availability of electricity	Telecom Services of BSNL and Airtel. Solar Supply for Lighthouse
14.	Availability of Potable water	Nil
15.	Housing infrastructure	Nil
16.	Presence of unique flora and fauna	Corals, Deers & Birds
17.	Presence of natural features waterfalls, streams, mountains, etc.	Nil
18.	Potential for adventure and water sports	Nil
19.	Presence of local/tribal/folk art	Nil
20.	Nearest tourist destination and distance	Ross & Smith Beach 600 m
21.	In case, tourism has to be developed on PPP mode, then the statutory permissions that would be required and from which agencies	Forest and CRZ clearance from Department of Forest and wildlife , Andaman & Nicobar Administration

SALIENT FEATURES

Name of Lighthouse : SIR HUGE ROSE

Location : Sir Huge Rose Island , Andaman & Nicobar Islands

S.No.	Factor to be Evaluated	Lighthouse specific Lat: 11°47.2'N Long : 93°05.1'E
1.	Size of the Lighthouse (area)	150 Sqm
2.	Status of land freehold/lease, etc	Freehold
3.	Ownership of land	DGLL
4.	Climate condition-Temp. & Rainfall	Avg. Temp- 23° C to 35°C Annual Avg. rainfall – 2600 mm.
5.	Tidal range	Avg. Range-1.5 to 3.0 m.
6.	History of Natural Disasters	Tsunami' 2004
7.	Distance from nearest port/harbour (if located on an Island)	20Km
8.	Distance from nearest airport/railhead	Veer Sarvarkar Airport - 52Km
9.	Distance from main city located nearby	Neil Island
10.	Availability of roads/access to the LH	CC approach way from shoreline about 150m
11.	Availability and facility of public transport	No Public transport
12.	Existence of natural harbours/berthing facility/landing arrangement	Nil
13.	Telecom coverage and availability of electricity	Yes
14.	Availability of Potable water	Nil
15.	Housing infrastructure	Lighthouse complex only
16.	Presence of unique flora and fauna	Nil
17.	Presence of natural features waterfalls, streams, mountains, etc.	Nil
18.	Potential for adventure and water sports	Nil
19.	Presence of local/tribal/folk art	Nil
20.	Nearest tourist destination and distance	Nil
21.	In case, tourism has to be developed on PPP mode, then the statutory permissions that would be required and from which agencies	CRZ clearance from Department of Forest and wildlife , Andaman & Nicobar Administration

SALIENT FEATURES

Name of Lighthouse : Aves

Location : Aves Island, Andaman & Nicobar Islands

S.No.	Factor to be Evaluated	Lighthouse specific
1.	Size of the Lighthouse (area)	225 Sqm
2.	Status of land freehold/lease, etc	Freehold
3.	Ownership of land	DGLL
4.	Climate condition-Temp. & Rainfall	Avg. Temp- 23° C to 35°C Annual Avg. rainfall – 2600 mm.
5.	Tidal range	Avg. Range-1.5 to 3.0 m.
6.	History of Natural Disasters	Tsunami' 2004
7.	Distance from nearest port/harbour (if located on an Island)	3Km
8.	Distance from nearest airport/railhead	Veer Sarvarkar Airport,Port Blair 170Km
9.	Distance from main city located nearby	Mayabunder
10.	Availability of roads/access to the Lighthouse	Kachcha approach way from shoreline about 1.0 km
11.	Availability and facility of public transport	No Public transport
12.	Existence of natural harbours/berthing facility/landing arrangement (if located on islands)	Nil
13.	Telecom coverage and availability of electricity	BSNL & Airtel, Solar supply only
14.	Availability of Potable water	Nil
15.	Housing infrastructure	Lighthouse complex only
16.	Presence of unique flora and fauna	Nil
17.	Presence of natural features waterfalls, streams, mountains, etc.	Nil
18.	Potential for adventure and water sports	Nil
19.	Presence of local/tribal/folk art	Nil
20.	Nearest tourist destination and distance	Nil
21.	In case, tourism has to be developed on PPP mode, then the statutory permissions that would be required and from which agencies	Forest and CRZ clearance from Department of Forest and wildlife , Andaman & Nicobar Administration

SALIENT FEATURES

Name of Lighthouse : East Island Lighthouse
 Location : Diglipur, Andaman & Nicobar Islands

S.No.	Factor to be Evaluated	Lighthouse specific Lat: 13°37.8'N Long: 93°03.0'E
1.	Size of the Lighthouse (area)	75m X 75m(1.40 acre)
2.	Status of land freehold/lease, etc	Freehold
3.	Ownership of land	DGLL
4.	Climate condition-Temp. & Rainfall	Avg. Temp- 23° C to 35°C Annual Avg. rainfall – 2600 mm.
5.	Tidal range	Avg. Range-1.5 to 3.0 m.
6.	History of Natural Disasters	Tsunami' 2004
7.	Distance from nearest port/harbour	i. East Island jetty to Lighthouse -700 m ii. Diglipur to East Island jetty -45Km
8.	Distance from nearest airport/railhead	Veer Sarvarkar Airport, Port Blair 340Km
9.	Distance from main city located nearby	Diglipur - 45Km Sea Route, accessible by Dhingy / ICG Vessels
10.	Availability of roads/access to the LH	Kachcha/CC Pathway of 700Mtr from Jetty
11.	Availability and facility of public transport	No Public transport
12.	Existence of natural harbours/ berthing facility/landing arrangement	East Island Jetty (Due for maintenance)
13.	Telecom coverage and availability of electricity	Telecom Service - BSNL (WLL), Electricity - DG Sets Supply/ solar Supply by DGLL
14.	Availability of Potable water	Rain water Storage/Rain water Harvesting
15.	Housing infrastructure	Lighthouse complex with staff quarters.
16.	Presence of unique flora and fauna	Corals, Deer & Birds
17.	Presence of natural features waterfalls, streams, mountains, etc.	Nil
18.	Potential for adventure and water sports	Yes
19.	Presence of local/tribal/folk art	Nil
20.	Nearest tourist destination and distance	Ross & Smith Island, Diglipur 40Km
21.	In case, tourism has to be developed on PPP mode, then the statutory permissions that would be required and from which agencies	Forest and CRZ clearance from Department of Forest and wildlife , Andaman & Nicobar Administration

SALIENT FEATURES

Name of Lighthouse : CHIDIYATAPU

Location : Port Blair, Andaman & Nicobar Islands

S.No.	Factor to be Evaluated	Lighthouse specific Lat: 11°47.2'N Long : 93°05.1'E
1.	Size of the Lighthouse (area)	225 Sq mtrs
2.	Status of land freehold/lease, etc	Freehold
3.	Ownership of land	DGLL
4.	Climate condition-Temp. & Rainfall	Avg. Temp- 23° C to 35°C Annual Avg. rainfall – 2600 mm.
5.	Tidal range	Avg. Range-1.5 to 3.0 m.
6.	History of Natural Disasters	Tsunami' 2004
7.	Distance from nearest port/harbour (if located on an Island)	23Km
8.	Distance from nearest airport/railhead	Veer Sarvarkar Airport - 29Km
9.	Distance from main city located nearby	Port Blair
10.	Availability of roads/access to the Lighthouse	Kachcha approach way from shoreline about 1.5 Km
11.	Availability and facility of public transport	Public transport available 4 Km before Lighthouse
12.	Existence of natural harbours/berthing facility/landing arrangement (if located on islands)	Nil
13.	Telecom coverage and availability of electricity	Nil
14.	Availability of Potable water	Nil
15.	Housing infrastructure	Lighthouse
16.	Presence of unique flora and fauna	Corals, Deers & Birds
17.	Presence of natural features waterfalls, streams, mountains, etc.	Nil
18.	Potential for adventure and water sports	Yes, Good areas for adventure & Water sports.
19.	Presence of local/tribal/folk art	Local Population.
20.	Nearest tourist destination and distance	Nil
21.	In case, tourism has to be developed on PPP mode, then the statutory permissions that would be required and from which agencies	CRZ clearance from Department of Forest and wildlife , Andaman & Nicobar Administration

SALIENT FEATURES

Name of Lighthouse : LITTLE ANDAMAN
 Location : Little Andaman, Andaman & Nicobar Islands

S.No.	Factor to be Evaluated	Lighthouse specific. Lat: 10°30.8'N ,Long: 90°30.2'E
1.	Size of the Lighthouse (area)	3.75 acre Approx.
2.	Status of land freehold/lease, etc	Freehold
3.	Ownership of land	DGLL
4.	Climate condition-Temp. & Rainfall	Avg. Temp- 23° C to 35°C Annual Avg. rainfall – 2600 mm.
5.	Tidal range	Avg. Range-1.5 to 3.0 m.
6.	History of Natural Disasters	Tsunami' 2004
7.	Distance from nearest port/harbour (if located on an Island)	19 km from Hut Bay Jetty, Little Andaman Island
8.	Distance from nearest airport/railhead	Veer Sarvarkar Airport, Port Blair - 140Km Inter-Island Heli Service also Available.
9.	Distance from main city located nearby	Hutbay – 19Km
10.	Availability of roads/access to the Lighthouse	Kachcha approach Pathway of 16Km from Hut Bay. Very difficult in Monsoon Season.
11.	Availability and facility of public transport	No Public transport
12.	Existence of natural harbours/berthing facility/landing	Hut Bay Jetty
13.	Telecom coverage and availability of electricity	Not Available.
14.	Availability of Potable water	Rain water Storage and Open Wells
15.	Housing infrastructure	Lighthouse complex with Staff Quarters
16.	Presence of unique flora and fauna	Marine Turtles, Corals, Monitor Lizard & Birds
17.	Presence of natural features waterfalls, streams, mountains, etc.	<ul style="list-style-type: none"> • Butler Bay, 14 km from the Hut Bay Jetty, is a beautiful beach suitable for sun basking, coral viewing, surfing etc. • White Surf waterfall in the midst of the evergreen rainforest is 6.5 km from the Hut Bay
18.	Potential for adventure and water sports	Little Andaman is a famous tourist place in A & N Islands. There is a good potential for adventure & water sports.
19.	Presence of local/tribal/folk art	The island is home to the Onge aboriginal tribes.
20.	Nearest tourist destination and distance	South Bay Beach, 500 m from Lighthouse
21.	In case, tourism has to be developed on PPP mode, then the statutory permissions that would be required and from which agencies	Forest and CRZ clearance from Department of Forest and wildlife , Andaman & Nicobar Administration

SALIENT FEATURES

Name of Lighthouse : RUTLAND

Location : Port Blair, Andaman & Nicobar Islands

S.No.	Factor to be Evaluated	Lighthouse specific Lat: 11°20.6.'N Long : 92°37.2'E
1.	Size of the Lighthouse (area)	7300 Sqm
2.	Status of land freehold/lease, etc	Freehold
3.	Ownership of land	DGLL
4.	Climate condition-Temp. & Rainfall	Avg. Temp- 23° C to 35°C Annual Avg. rainfall – 2600 mm.
5.	Tidal range	Avg. Range-1.5 to 3.0 m.
6.	History of Natural Disasters	Tsunami' 2004
7.	Distance from nearest port/harbour (if located on an Island)	55Km
8.	Distance from nearest airport/railhead	Veer Sarvarkar Airport - 57Km
9.	Distance from main city located nearby	Port Blair
10.	Availability of roads/access to the Lighthouse	Kachcha approach way about 500m from shoreline
11.	Availability and facility of public transport	No Public transport
12.	Existence of natural harbours/berthing facility/landing arrangement (if located on islands)	Nil
13.	Telecom coverage and availability of electricity	Nil
14.	Availability of Potable water	Nil
15.	Housing infrastructure	Lighthouse
16.	Presence of unique flora and fauna	Nil
17.	Presence of natural features waterfalls, streams, mountains, etc.	Nil
18.	Potential for adventure and water sports	Nil
19.	Presence of local/tribal/folk art	Locals
20.	Nearest tourist destination and distance	Nil
21.	In case, tourism has to be developed on PPP mode, then the statutory permissions that would be required and from which agencies	CRZ clearance from Department of Forest and wildlife , Andaman & Nicobar Administration

SALIENT FEATURES

Name of Lighthouse : KEATING POINT

Location : Car Nicobar, Andaman & Nicobar Islands

S.N o.	Factor to be Evaluated	Lighthouse specific Lat: 09°15.4'N Long: 92°46.5'E
1.	Size of the Lighthouse (area)	13 Acre (partly submerged in sea)
2.	Status of land freehold/lease, etc	Freehold
3.	Ownership of land	DGLL
4.	Climate condition-Temp. & Rainfall	Avg. Temp- 23° C to 35°C Annual Avg. rainfall – 2600 mm.
5.	Tidal range	Avg. Range-1.5 to 3.0 m.
6.	History of Natural Disasters	Tsunami' 2004
7.	Distance from nearest port/harbour (if located on an Island)	3 km from Mus Jetty
8.	Distance from nearest airport/railhead	Car Nicobar Airport - 16Km Weekly Chartered Flight Service by Air India and Daily Inter Island Helicopter Service
9.	Distance from main city located nearby	Head Quarter, 25 km
10.	Availability of roads/access to the Lighthouse	Black Top Road up to Lighthouse Complex from Mus Jetty.
11.	Availability and facility of public transport	Public transport available up to 2 km from Lighthouse.
12.	Existence of natural harbours/berthing facility/landing arrangement .	Mus Jetty
13.	Telecom coverage and availability of electricity	BSNL Service. Electricity supply from state board and back up with DG sets.
14.	Availability of Potable water	Rain water Storage, APWD Water Supply and Open Well
15.	Housing infrastructure	Lighthouse complex with Staff Quarters
16.	Presence of unique flora and fauna	Nil
17.	Presence of natural features waterfalls, streams, mountains, etc.	Nil
18.	Potential for adventure and water sports	Nil
19.	Presence of local/tribal/folk art	Yes- Nicobari tribals
20.	Nearest tourist destination and distance	Nil
21.	In case, tourism has to be developed on PPP mode, then the statutory permissions that would be required and from which agencies	Permission from Local Tribe Captain, Forest and CRZ clearance from Department of Forest and wildlife , Andaman & Nicobar Administration

SALIENT FEATURES

Name of Lighthouse : SOUTH SENTINEL

Location : South Sentinel, Andaman & Nicobar Islands

S.No.	Factor to be Evaluated	Lighthouse specific Lat: 10°58.9'N Long : 92°13.6'E
1.	Size of the Lighthouse (area)	400 Sqm
2.	Status of land freehold/lease, etc	Freehold
3.	Ownership of land	DGLL
4.	Climate condition-Temp. & Rainfall	Avg. Temp- 23° C to 35°C Annual Avg. rainfall – 2600 mm.
5.	Tidal range	Avg. Range-1.5 to 3.0 m.
6.	History of Natural Disasters	Tsunami' 2004
7.	Distance from nearest port/harbour	27Km
8.	Distance from nearest airport/railhead	Veer Sarvarkar Airport - 132Km
9.	Distance from main city located nearby	Hut Bay
10.	Availability of roads/access to the Lighthouse	Kachcha approach way of 1 Km from shoreline
11.	Availability and facility of public transport	No Public transport
12.	Existence of natural harbours/berthing facility/landing arrangement	Nil
13.	Telecom coverage and availability of electricity	Nil
14.	Availability of Potable water	Nil
15.	Housing infrastructure	Lighthouse
16.	Presence of unique flora and fauna	Coral reef
17.	Presence of natural features waterfalls, streams, mountains, etc.	Nil
18.	Potential for adventure and water sports	Nil
19.	Presence of local/tribal/folk art	Nil
20.	Nearest tourist destination and distance	Nil
21.	In case, tourism has to be developed on PPP mode, then the statutory permissions that would be required and from which agencies	CRZ clearance from Department of Forest and wildlife , Andaman & Nicobar Administration

SALIENT FEATURES

Name of Lighthouse : NORCONDUM

Location : Narcondum Island, Andaman & Nicobar Islands

S.No.	Factor to be Evaluated	Lighthouse specific Lat: 13°27.4'N Long : 94°15.3'E
1.	Size of the Lighthouse (area)	100 Sq mtrs
2.	Status of land freehold/lease, etc	Freehold
3.	Ownership of land	DGLL
4.	Climate condition-Temp. & Rainfall	Avg. Temp- 23° C to 35°C Annual Avg. rainfall – 2600 mm.
5.	Tidal range	Avg. Range-1.5 to 3.0 m.
6.	History of Natural Disasters	Tsunami' 2004 Extinct Volcano
7.	Distance from nearest port/harbour	Diglipur, 150Km
8.	Distance from nearest airport/railhead	Veer Sarvarkar Airport, Port Blair - 270Km
9.	Distance from main city located nearby	Nil
10.	Availability of roads/access to the Lighthouse	Kachcha approach way from shoreline
11.	Availability and facility of public transport	No Public transport
12.	Existence of natural harbours/berthing facility/landing arrangement .	Nil
13.	Telecom coverage and availability of electricity	Nil
14.	Availability of Potable water	Nil
15.	Housing infrastructure	Lighthouse Only.
16.	Presence of unique flora and fauna	Corals & The Narcondam hornbill is an endangered hornbill that is endemic.
17.	Presence of natural features waterfalls, streams, mountains, etc.	Narcondam Island's mountain, at 710 meters is the second tallest point in the Andaman and Nicobar Islands.
18.	Potential for adventure and water sports	The waters surrounding Narcondam Island are a diving destination.
19.	Presence of local/tribal/folk art	Nil
20.	Nearest tourist destination and distance	Nil
21.	In case, tourism has to be developed on PPP mode, then the statutory permissions that would be required and from which agencies	Forest and CRZ clearance from Department of Forest and wildlife , Andaman & Nicobar Administration